

Auxiliary generator specifications

ENGINE MODEL LINE-UP - MARINE AUXILIARY GENERATOR

Series	100 kW	500 kW	1,000 kW	2,000 kW	5,000 kW
High speed					
6D16	106 □ 129				
6D24	196 □ 218				
S6A3		400 □ 635			
S6B3		335 □ 375			
S6R2		485 □ 640			
S6R		515 □ 635			
S12R			840 □ 1,270		
S12A2			679 □ 828		
S16R				1,480 □ 1,690	
S16R2				1,568 □ 1,960	
Medium speed					
S6U				1,150 □ 1,343	
S6U2				1,250 □ 1,363	
S8U				1,693 □ 1,790	
S12U					2,299 □ 2,685
S16U					3,065 □ 3,580

Auxiliary generator products - IMO Tier I / non emission - High speed

Engine model	kW	bhp	rpm	Hz	Emission	Page
50 Hz						
6D16-T	106	142	1,500	50	not regulated	68
6D24-T	169	227	1,500	50	non emission	69
6D24-TC	181	243	1,500	50	IMO-T1	69
S6B3-MPTA	335	449	1,500	50	IMO-T1	70
S6A3-MPTA	400	536	1,500	50	IMO-T1	71
S6R-MPTA	515	691	1,500	50	IMO-T1	72
S6R2-MPTA	595	798	1,500	50	IMO-T1	73
S12A2-MPTA	679	911	1,500	50	IMO-T1	74
S12R-MPTA	1,110	1,489	1,500	50	IMO-T1	75
S16R-MPTA	1,480	1,985	1,500	50	IMO-T1	76
60 Hz						
6D16-T	129	173	1,800	60	not regulated	68
6D24-T	195	262	1,800	60	non emission	69
6D24-TC	218	292	1,800	60	IMO-T1	69
S6B3-MPTA	375	503	1,800	60	IMO-T1	70
S6A3-MPTA	460	617	1,800	60	IMO-T1	71
S6R-MPTA	595	798	1,800	60	IMO-T1	72
S6R2-MPTA	485	650	1,200	60	IMO-T1	73
S12A2-MPTA	761	1,021	1,800	60	IMO-T1	74
S12R-MPTA	1,190	1,596	1,800	60	IMO-T1	75
S16R-MPTA	1,590	2,132	1,800	60	IMO-T1	76

Auxiliary generator products - IMO Tier II / CCNR-2 / EU-3A - High speed

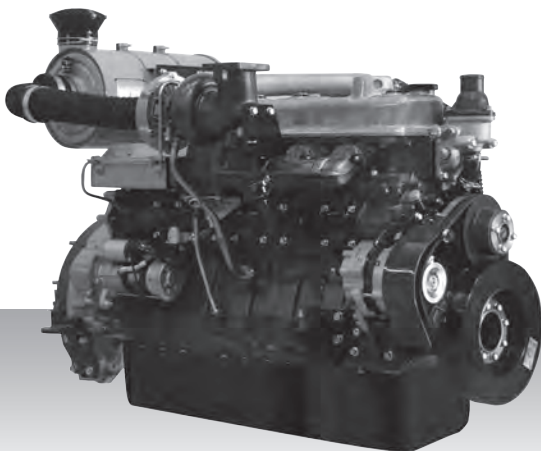
Engine model	kW	bhp	rpm	Hz	Emission	Page
50 Hz						
6D16-T	106	142	1,500	50	not regulated for IMO-T2	77
6D24-TC	181	243	1,500	50	IMO-T2	78
S6B3-T2MPTAW	335	449	1,500	50	IMO-T2	79
S6R-(Z3)MPTAW	545	731	1,500	50	IMO-T2	80
S6R2-T2MPTK	640	858	1,500	50	IMO-T2	81
S12A2-MPTAW	709	951	1,500	50	IMO-T2	82
S12R-MPTAW	1,120	1,502	1,500	50	IMO-T2	83
S16R-MPTAW	1,500	2,012	1,500	50	IMO-T2	84
S16R2-T2MPTAW	1,960	2,628	1,500	50	IMO-T2	85
60 Hz						
6D16-T	129	173	1,800	60	not regulated for IMO-T2	77
6D24-TC	218	292	1,800	60	IMO-T2	78
S6B3-T2MPTAW	375	503	1,800	60	IMO-T2	79
S6R-(Z3)MPTAW	635	852	1,800	60	IMO-T2 / EU-3A	80
S6R2-T2MPTK	500	671	1,200	60	IMO-T2	81
S12A2-MPTAW	828	1,110	1,800	60	IMO-T2	82
S12R-MPTAW	840	1,126	1,200	60	IMO-T2	83
S12R-MPTAW	1,270	1,703	1,800	60	IMO-T2	83
S16R-MPTAW	1,120	1,502	1,200	60	IMO-T2	84
S16R-MPTAW	1,690	2,266	1,800	60	IMO-T2	84
S16R2-T2MPTAW	1,568	2,103	1,200	60	IMO-T2	85

Auxiliary generator products - IMO Tier II - Medium speed

Engine model	kW	bhp	rpm	Hz	Emission	Page
50 Hz						
S6U-MPTK	1,270	1,703	1,000	50	IMO-T2	86
S6U2-MPTK	1,363	1,828	1,000	50	IMO-T2	87
S8U-MPTK	1,693	2,270	1,000	50	IMO-T2	88
S12U-MPTK	2,541	3,408	1,000	50	IMO-T2	89
S16U-MPTK	3,388	4,543	1,000	50	IMO-T2	90
60 Hz						
S6U-MPTK	1,150	1,542	900	60	IMO-T2	86
S6U-MPTK	1,343	1,801	1,200	60	IMO-T2	86
S6U2-MPTK	1,250	1,676	900	60	IMO-T2	87
S8U-MPTK	1,533	2,056	900	60	IMO-T2	88
S8U-MPTK	1,790	2,400	1,200	60	IMO-T2	88
S12U-MPTK	2,299	3,083	900	60	IMO-T2	89
S12U-MPTK	2,685	3,601	1,200	60	IMO-T2	89
S16U-MPTK	3,065	4,110	900	60	IMO-T2	90
S16U-MPTK	3,580	4,801	1,200	60	IMO-T2	90

Auxiliary generator -
IMO Tier I / non emission - High speed

6D16-T



6-cylinder, 4-cycle, water cooled diesel engine,
with direct-injection, turbocharger and air-cooler.

Bore x stroke (mm) : 118 x 115
Displacement (l) : 7.54

Commercial rating

kW	bhp	rpm	Hz	Fuel cons. l/hr*	Emission
106	142	1,500	50	17.9	not regulated
129	173	1,800	60	on request	not regulated

*Average fuel consumption according to ISO, see page 6.
Specifications / data subject to change without prior notice.

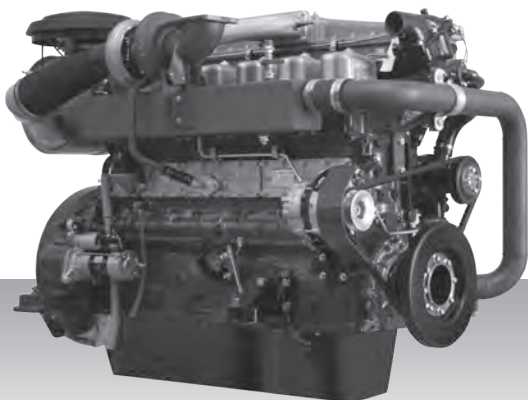
Product dimensions & dry weight

L (mm) : 1,335
W (mm) : 731
H (mm) : 830
Dry weight (kg) : 575

Dimensions and weight are based on standard configuration.

Auxiliary generator -
IMO Tier I / non emission - High speed

6D24-T(C)



6-cylinder, 4-cycle, water cooled diesel engine,
with direct-injection, turbocharger and air-cooler.

Bore x stroke (mm) : 130 x 150

Displacement (l) : 11.95

Commercial rating

kW	bhp	rpm	Hz	Fuel cons. l/hr*	Emission
169	227	1,500	50	on request	non emission
181	243	1,500	50	25.5	IMO-T1
195	262	1,800	60	on request	non emission
218	292	1,800	60	30.9	IMO-T1

*Average fuel consumption according to ISO, see page 6.
Specifications / data subject to change without prior notice.

Product dimensions & dry weight

L (mm) : 1,535

W (mm) : 880

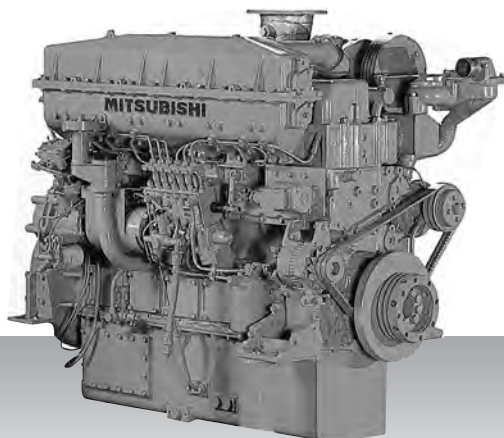
H (mm) : 1,235

Dry weight (kg) : 1,209

Dimensions and weight are based on standard configuration.

Auxiliary generator -
IMO Tier I / non emission - High speed

S6B3-MPTA



6-cylinder, 4-cycle, water cooled diesel engine,
with direct-injection, turbocharger and air-cooler.

Bore x stroke (mm) : 135 x 170

Displacement (l) : 14.60

Commercial rating

kW	bhp	rpm	Hz	Fuel cons. l/hr*	Emission
335	449	1,500	50	on request	IMO-T1
375	503	1,800	60	on request	IMO-T1

*Average fuel consumption according to ISO, see page 6.
Specifications / data subject to change without prior notice.

Product dimensions & dry weight

L (mm) : 1,834

W (mm) : 873

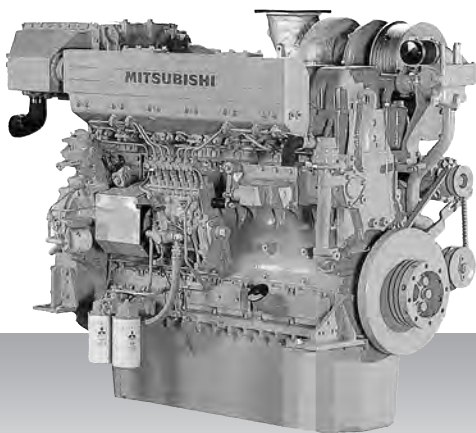
H (mm) : 1,331

Dry weight (kg) : 1,300

Dimensions and weight are based on standard configuration.

Auxiliary generator -
IMO Tier I / non emission - High speed

S6A3-MPTA



6-cylinder, 4-cycle, water cooled diesel engine,
with direct-injection, turbocharger and air-cooler.

Bore x stroke (mm) : 150 x 175

Displacement (l) : 18.56

Commercial rating

kW	bhp	rpm	Hz	Fuel cons. l/hr*	Emission
400	536	1,500	50	49.4	IMO-T1
460	617	1,800	60	57.8	IMO-T1

*Average fuel consumption according to ISO, see page 6.
Specifications / data subject to change without prior notice.

Product dimensions & dry weight

L (mm) : 1,636

W (mm) : 924

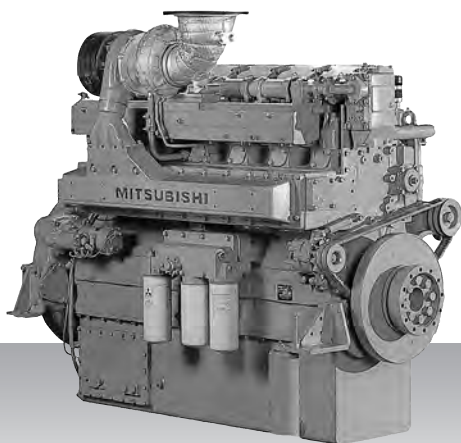
H (mm) : 1,421

Dry weight (kg) : 1,850

Dimensions and weight are based on standard configuration.

Auxiliary generator -
IMO Tier I / non emission - High speed

S6R-MPTA



6-cylinder, 4-cycle, water cooled diesel engine,
with direct-injection, turbocharger and air-cooler.

Bore x stroke (mm) : 170 x 180
Displacement (l) : 24.51

Commercial rating

kW	bhp	rpm	Hz	Fuel cons. l/hr*	Emission
515	691	1,500	50	64.4	IMO-T1
595	798	1,800	60	77.9	IMO-T1

*Average fuel consumption according to ISO, see page 6.
Specifications / data subject to change without prior notice.

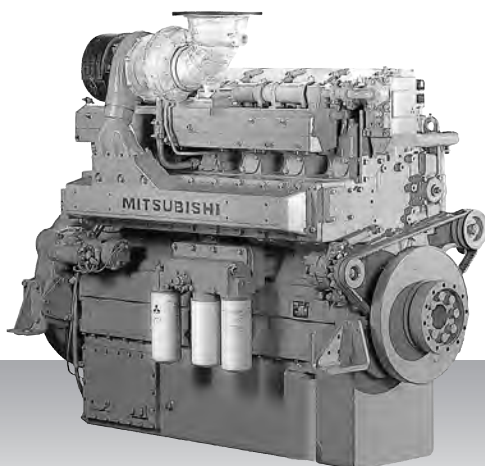
Product dimensions & dry weight

L (mm) : 1,811
W (mm) : 1,108
H (mm) : 1,614
Dry weight (kg) : 2,780

Dimensions and weight are based on standard configuration.

Auxiliary generator -
IMO Tier I / non emission - High speed

S6R2-MPTA



6-cylinder, 4-cycle, water cooled diesel engine,
with direct-injection, turbocharger and air-cooler.

Bore x stroke (mm) : 170 x 220

Displacement (l) : 29.96

Commercial rating

kW	bhp	rpm	Hz	Fuel cons. l/hr*	Emission
485	650	1,200	60	57.9	IMO-T1
595	798	1,500	50	77.9	IMO-T1

*Average fuel consumption according to ISO, see page 6.
Specifications / data subject to change without prior notice.

Product dimensions & dry weight

L (mm) : 1,811

W (mm) : 1,108

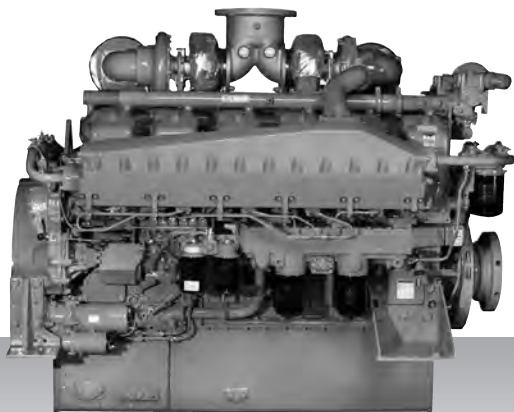
H (mm) : 1,694

Dry weight (kg) : 2,910

Dimensions and weight are based on standard configuration.

Auxiliary generator -
IMO Tier I / non emission - High speed

S12A2-MPTA



12-cylinder, 4-cycle, water cooled diesel engine,
with direct-injection, turbocharger and air-cooler.

Bore x stroke (mm) : 150 x 160
Displacement (l) : 33.93

Commercial rating

kW	bhp	rpm	Hz	Fuel cons. l/hr*	Emission
761	1,021	1,800	60	97.5	IMO-T1
679	911	1,500	50	83.0	IMO-T1

*Average fuel consumption according to ISO, see page 6.
Specifications / data subject to change without prior notice.

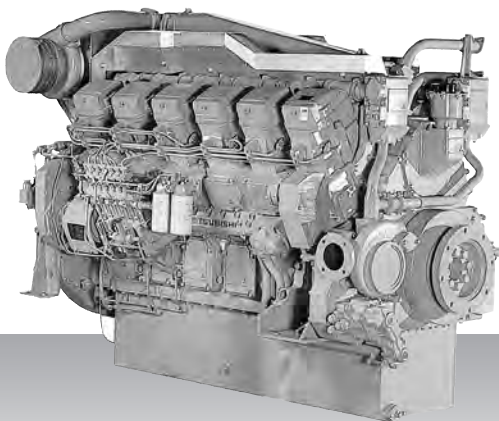
Product dimensions & dry weight

L (mm) : 2,002
W (mm) : 1,442
H (mm) : 1,596
Dry weight (kg) : 3,380

Dimensions and weight are based on standard configuration.

Auxiliary generator -
IMO Tier I / non emission - High speed

S12R-MPTA



12-cylinder, 4-cycle, water cooled diesel engine,
with direct-injection, turbocharger and air-cooler.

Bore x stroke (mm) : 170 x 180

Displacement (l) : 49.03

Commercial rating

kW	bhp	rpm	Hz	Fuel cons. l/hr*	Emission
1,110	1,489	1,500	50	136.6	IMO-T1
1,190	1,596	1,800	60	155.2	IMO-T1

*Average fuel consumption according to ISO, see page 6.
Specifications / data subject to change without prior notice.

Product dimensions & dry weight

L (mm) : 2,376

W (mm) : 1,512

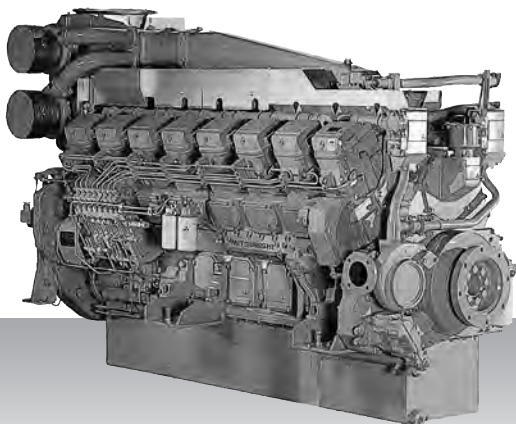
H (mm) : 1,742

Dry weight (kg) : 5,230

Dimensions and weight are based on standard configuration.

Auxiliary generator -
IMO Tier I / non emission - High speed

S16R-MPTA



16-cylinder, 4-cycle, water cooled diesel engine,
with direct-injection, turbocharger, air-cooler,.

Bore x stroke (mm) : 170 x 180

Displacement (l) : 65.37

Commercial rating

kW	bhp	rpm	Hz	Fuel cons. l/hr*	Emission
1,480	1,985	1,500	50	177.9	IMO-T1
1,590	2,132	1,800	60	200.9	IMO-T1

*Average fuel consumption according to ISO, see page 6.
Specifications / data subject to change without prior notice.

Product dimensions & dry weight

L (mm) : 2,931

W (mm) : 1,512

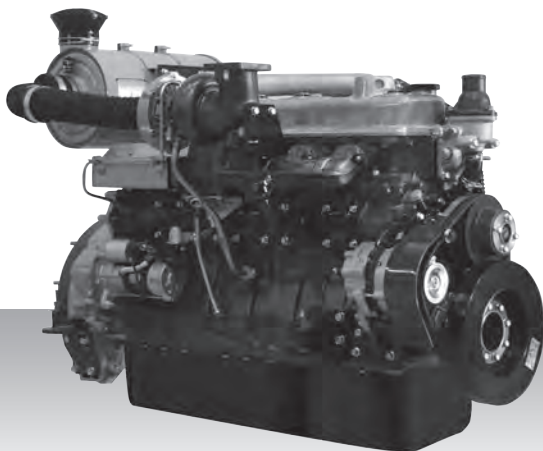
H (mm) : 1,960

Dry weight (kg) : 6,660

Dimensions and weight are based on standard configuration.

Auxiliary generator -
IMO Tier II / CCNR-2 / EU-3A - High speed

6D16-T



6-cylinder, 4-cycle, water cooled diesel engine,
with direct-injection, turbocharger and air-cooler.

Bore x stroke (mm) : 118 x 115

Displacement (l) : 7.54

Commercial rating

kW	bhp	rpm	Hz	Fuel cons. l/hr*	Emission
106	142	1,500	50	17.9	not regulated for IMO-T2
129	173	1,800	60	on request	not regulated for IMO-T2

*Average fuel consumption according to ISO, see page 6.
Specifications / data subject to change without prior notice.

Product dimensions & dry weight

L (mm) : 1,335

W (mm) : 731

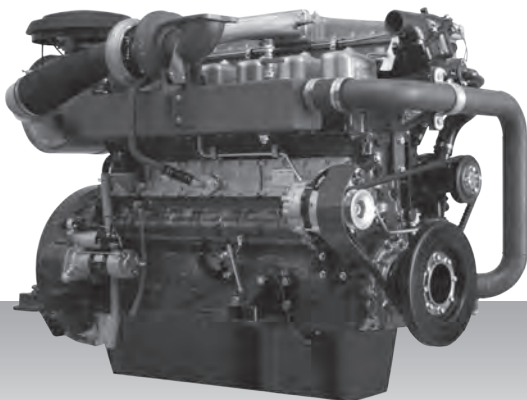
H (mm) : 830

Dry weight (kg) : 575

Dimensions and weight are based on standard configuration.

Auxiliary generator -
IMO Tier II / CCNR-2 / EU-3A - High speed

6D24-TC



6-cylinder, 4-cycle, water cooled diesel engine,
with direct-injection, turbocharger and air-cooler.

Bore x stroke (mm) : 130 x 150

Displacement (l) : 11.95

Commercial rating

kW	bhp	rpm	Hz	Fuel cons. l/hr*	Emission
181	243	1,500	50	25.5	IMO-T2
218	292	1,800	60	30.9	IMO-T2

*Average fuel consumption according to ISO, see page 6.
Specifications / data subject to change without prior notice.

Product dimensions & dry weight

L (mm) : 1,535

W (mm) : 880

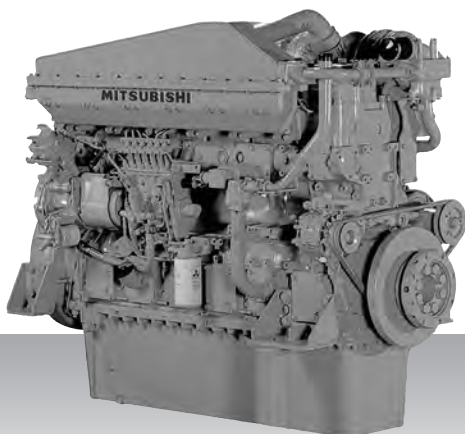
H (mm) : 1,235

Dry weight (kg) : 575

Dimensions and weight are based on standard configuration.

Auxiliary generator -
IMO Tier II / CCNR-2 / EU-3A - High speed

S6B3-T2MPTAW



6-cylinder, 4-cycle, water cooled diesel engine,
with direct-injection, turbocharger and air-cooler.

Bore x stroke (mm) : 135 x 170

Displacement (l) : 14.60

Commercial rating

kW	bhp	rpm	Hz	Fuel cons. l/hr*	Emission
335	449	1,500	50	45.7	IMO-T2
375	503	1,800	60	52.5	IMO-T2

*Average fuel consumption according to ISO, see page 6.
Specifications / data subject to change without prior notice.

Product dimensions & dry weight

L (mm) : 1,465

W (mm) : 873

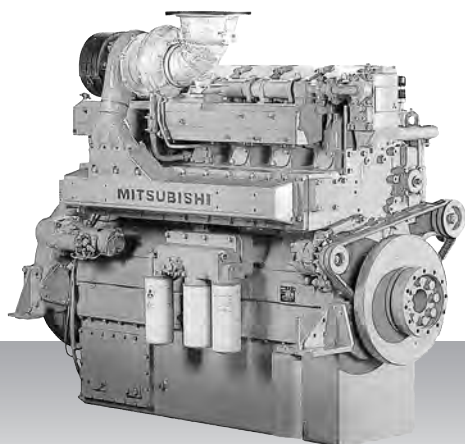
H (mm) : 1,331

Dry weight (kg) : 1,300

Dimensions and weight are based on standard configuration.

Auxiliary generator -
IMO Tier II / CCNR-2 / EU-3A - High speed

S6R-(Z3)MPTAW



6-cylinder, 4-cycle, water cooled diesel engine,
with direct-injection, turbocharger and air-cooler.

Bore x stroke (mm) : 170 x 180

Displacement (l) : 24.51

Commercial rating

kW	bhp	rpm	Hz	Fuel cons. l/hr*	Emission
545	731	1,500	50	on request	IMO-T2
635	852	1,800	60	82.4	IMO-T2 / EU-3A

*Average fuel consumption according to ISO, see page 6.
Specifications / data subject to change without prior notice.

Product dimensions & dry weight

L (mm) : 1,786

W (mm) : 1,220

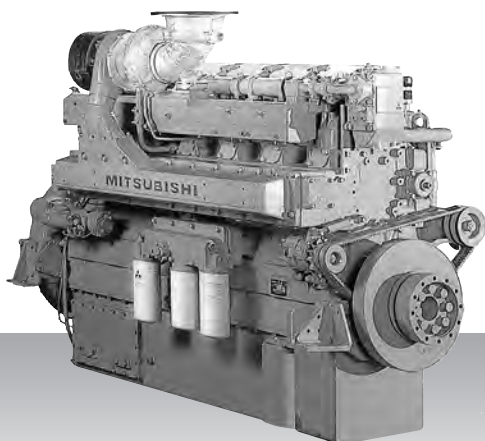
H (mm) : 1,650

Dry weight (kg) : 2,913

Dimensions and weight are based on standard configuration.

Auxiliary generator -
IMO Tier II / CCNR-2 / EU-3A - High speed

S6R2-T2MPTK



6-cylinder, 4-cycle, water cooled diesel engine,
with direct-injection, turbocharger and air-cooler.

Bore x stroke (mm) : 170 x 220
Displacement (l) : 29.96

Commercial rating

kW	bhp	rpm	Hz	Fuel cons. l/hr*	Emission
500	671	1,200	60	on request	IMO-T2
640	858	1,500	50	on request	IMO-T2

*Average fuel consumption according to ISO, see page 6.
Specifications / data subject to change without prior notice.

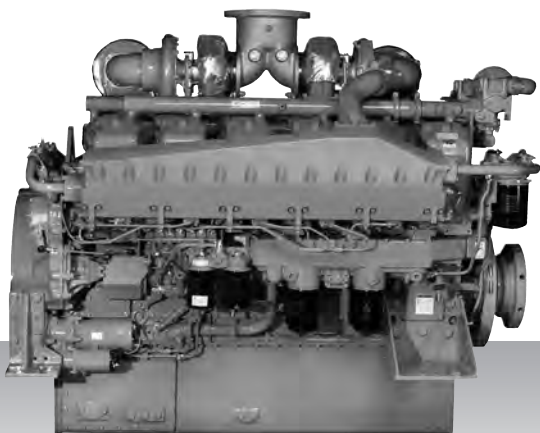
Product dimensions & dry weight

L (mm) : 1,811
W (mm) : 1,108
H (mm) : 1,694
Dry weight (kg) : 2,960

Dimensions and weight are based on standard configuration.

Auxiliary generator -
IMO Tier II / CCNR-2 / EU-3A - High speed

S12A2-MPTAW



12-cylinder, 4-cycle, water cooled diesel engine,
with direct-injection, turbocharger and air-cooler.

Bore x stroke (mm) : 150 x 160

Displacement (l) : 33.93

Commercial rating

kW	bhp	rpm	Hz	Fuel cons. l/hr*	Emission
709	951	1,500	50	on request	IMO-T2
828	1,110	1,800	60	102.0	IMO-T2

*Average fuel consumption according to ISO, see page 6.
Specifications / data subject to change without prior notice.

Product dimensions & dry weight

L (mm) : 2,059

W (mm) : 1,654

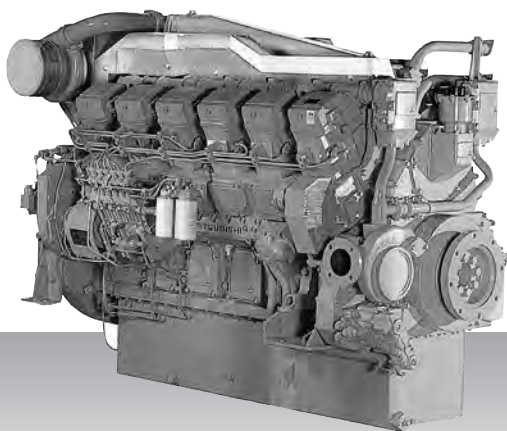
H (mm) : 1,596

Dry weight (kg) : 3,840

Dimensions and weight are based on standard configuration.

Auxiliary generator -
IMO Tier II / CCNR-2 / EU-3A - High speed

S12R-MPTAW



12-cylinder, 4-cycle, water cooled diesel engine,
with direct-injection, turbocharger and air-cooler.

Bore x stroke (mm) : 170 x 180

Displacement (l) : 49.03

Commercial rating

kW	bhp	rpm	Hz	Fuel cons. l/hr*	Emission
840	1,126	1,200	60	95.6	IMO-T2
1,120	1,502	1,500	50	124.0	IMO-T2
1,270	1,703	1,800	60	163.6	IMO-T2

*Average fuel consumption according to ISO, see page 6.
Specifications / data subject to change without prior notice.

Product dimensions & dry weight

L (mm) : 2,416

W (mm) : 1,585

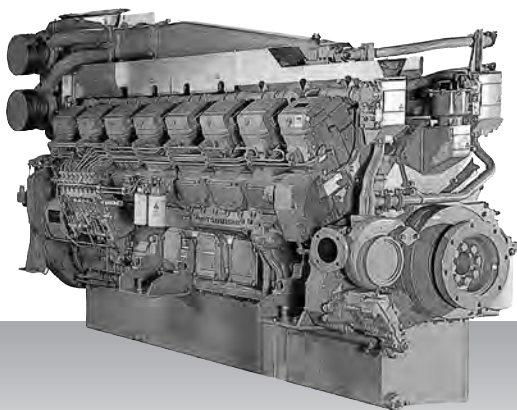
H (mm) : 1,807

Dry weight (kg) : 5,470

Dimensions and weight are based on standard configuration.

Auxiliary generator -
IMO Tier II / CCNR-2 / EU-3A - High speed

S16R-MPTAW



16-cylinder, 4-cycle, water cooled diesel engine,
with direct-injection, turbocharger and air-cooler.

Bore x stroke (mm) : 170 x 180

Displacement (l) : 65.37

Commercial rating

kW	bhp	rpm	Hz	Fuel cons. l/hr*	Emission
1,120	1,502	1,200	60	on request	IMO-T2
1,500	2,012	1,500	50	182.6	IMO-T2
1,690	2,266	1,800	60	211.9	IMO-T2

*Average fuel consumption according to ISO, see page 6.
Specifications / data subject to change without prior notice.

Product dimensions & dry weight

L (mm) : 2,971

W (mm) : 1,585

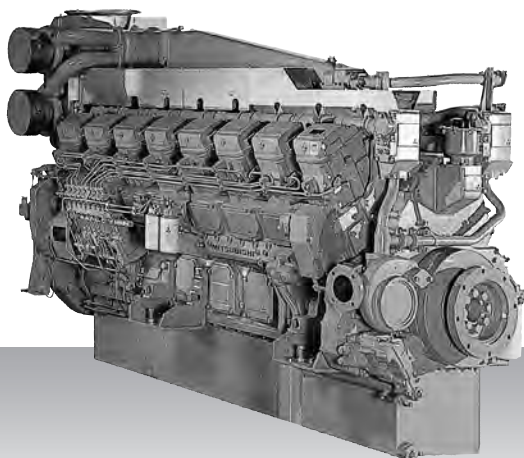
H (mm) : 1,960

Dry weight (kg) : 6,950

Dimensions and weight are based on standard configuration.

Auxiliary generator -
IMO Tier II /CCNR-2 / EU-3A - High speed

S16R2-T2MPTAW



16-cylinder, 4-cycle, water cooled diesel engine,
with direct-injection, turbocharger and air-cooler.

Bore x stroke (mm) : 170 x 220

Displacement (l) : 79.90

Commercial rating

kW	bhp	rpm	Hz	Fuel cons. l/hr*	Emission
1,568	2,103	1,200	60	on request	IMO-T2
1,960	2,628	1,500	50	on request	IMO-T2

*Average fuel consumption according to ISO, see page 6.
Specifications / data subject to change without prior notice.

Product dimensions & dry weight

L (mm) : 2,946

W (mm) : 1,525

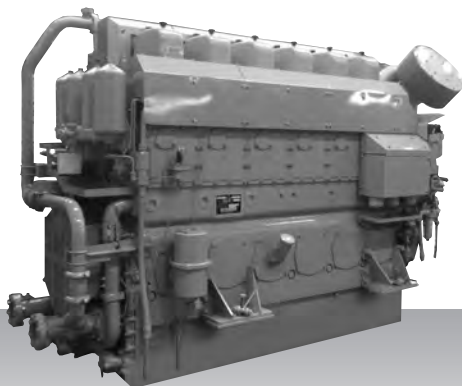
H (mm) : 2,030

Dry weight (kg) : 7,750

Dimensions and weight are based on standard configuration.

Auxiliary generator -
IMO Tier II - Medium speed

S6U-MPTK



6-cylinder, 4-cycle, water cooled diesel engine,
with direct-injection, turbocharger, air-cooler,.

Bore x stroke (mm) : 240 x 260

Displacement (l) : 70.57

Commercial rating

kW	bhp	rpm	Hz	Fuel cons. g/kWh*	Emission
1,150	1,542	900	60	on request	IMO-T2
1,270	1,703	1,000	50	on request	IMO-T2
1,343	1,801	1,200	60	on request	IMO-T2

*Fuel consumption value at 100% rated power in g/kWh.
Specifications / data subject to change without prior notice.

Product dimensions & dry weight

L (mm) : 3,211

W (mm) : 1,429

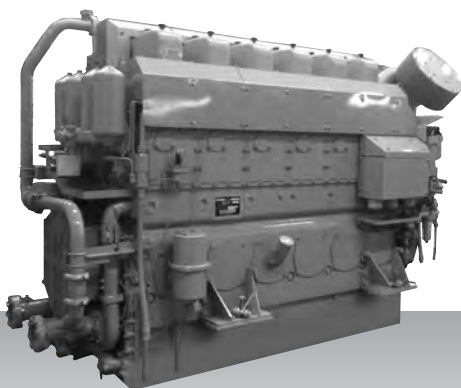
H (mm) : 2,104

Dry weight (kg) : 8,400

Dimensions and weight are based on standard configuration.

Auxiliary generator -
IMO Tier II - Medium speed

S6U2-MPTK



6-cylinder, 4-cycle, water cooled diesel engine,
with direct-injection, turbocharger and air-cooler.

Bore x stroke (mm) : 240 x 300

Displacement (l) : 81.43

Commercial rating

kW	bhp	rpm	Hz	Fuel cons. g/kWh*	Emission
1,250	1,676	900	60	on request	IMO-T2
1,363	1,828	1,000	50	on request	IMO-T2

*Fuel consumption value at 100% rated power in g/kWh.
Specifications / data subject to change without prior notice.

Product dimensions & dry weight

L (mm) : 3,226

W (mm) : 1,429

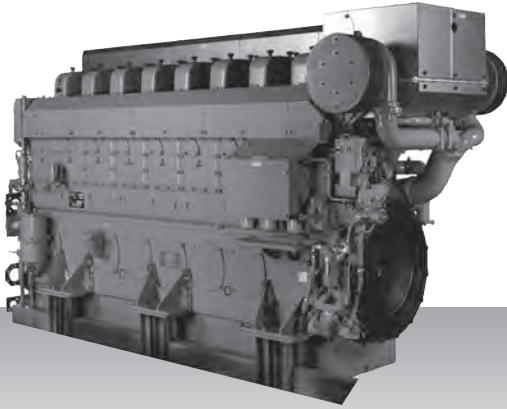
H (mm) : 2,177

Dry weight (kg) : 8,600

Dimensions and weight are based on standard configuration.

Auxiliary generator -
IMO Tier II - Medium speed

S8U-MPTK



8-cylinder, 4-cycle, water cooled diesel engine,
with direct-injection, turbocharger and air-cooler.

Bore x stroke (mm) : 240 x 260
Displacement (l) : 94.10

Commercial rating

kW	bhp	rpm	Hz	Fuel cons. g/kWh*	Emission
1,533	2,056	900	60	on request	IMO-T2
1,693	2,270	1,000	50	on request	IMO-T2
1,790	2,400	1,200	60	on request	IMO-T2

*Fuel consumption value at 100% rated power in g/kWh.
Specifications / data subject to change without prior notice.

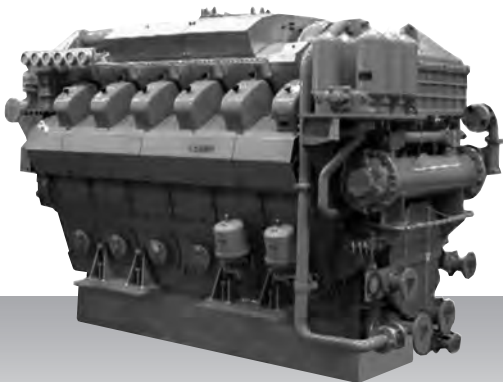
Product dimensions & dry weight

L (mm) : 4,065
W (mm) : 1,539
H (mm) : 2,192
Dry weight (kg) : 11,000

Dimensions and weight are based on standard configuration.

Auxiliary generator -
IMO Tier II - Medium speed

S12U-MPTK



12-cylinder, 4-cycle, water cooled diesel engine,
with direct-injection, turbocharger and air-cooler.

Bore x stroke (mm) : 240 x 260

Displacement (l) : 141.15

Commercial rating

kW	bhp	rpm	Hz	Fuel cons. g/kWh*	Emission
2,299	3,083	900	60	on request	IMO-T2
2,541	3,408	1,000	50	on request	IMO-T2
2,685	3,601	1,200	60	on request	IMO-T2

*Fuel consumption value at 100% rated power in g/kWh.
Specifications / data subject to change without prior notice.

Product dimensions & dry weight

L (mm) : 3,562

W (mm) : 1,910

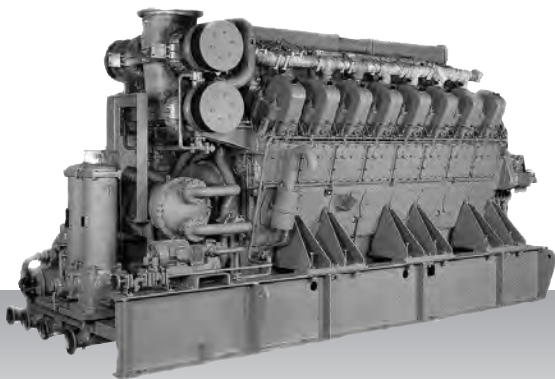
H (mm) : 2,374

Dry weight (kg) : 16,600

Dimensions and weight are based on standard configuration.

Auxiliary generator -
IMO Tier II - Medium speed

S16U-MPTK



16-cylinder, 4-cycle, water cooled diesel engine,
with direct-injection, turbocharger and air-cooler.

Bore x stroke (mm) : 240 x 260

Displacement (l) : 188.19

Commercial rating

kW	bhp	rpm	Hz	Fuel cons. g/kWh*	Emission
3,065	4,110	900	60	on request	IMO-T2
3,388	4,543	1,000	50	on request	IMO-T2
3,580	4,801	1,200	60	on request	IMO-T2

*Fuel consumption value at 100% rated power in g/kWh.
Specifications / data subject to change without prior notice.

Product dimensions & dry weight

L (mm) : 4,628

W (mm) : 1,710

H (mm) : 2,473

Dry weight (kg) : 20,500

Dimensions and weight are based on standard configuration.