

Gas generator set specifications

ENGINE MODEL LINE-UP - MARINE GAS GENERATOR SET

Series	100 kW	500 kW	1,000 kW	2,000 kW	5,000 kW
MAS-G 430		374 □ 431			
MAS-G 470		468			
MAS-G 870			750 □ 968		
MAS-G 1160			975 □ 1,157		
MAS-G 1185			1,200 □	1,885	

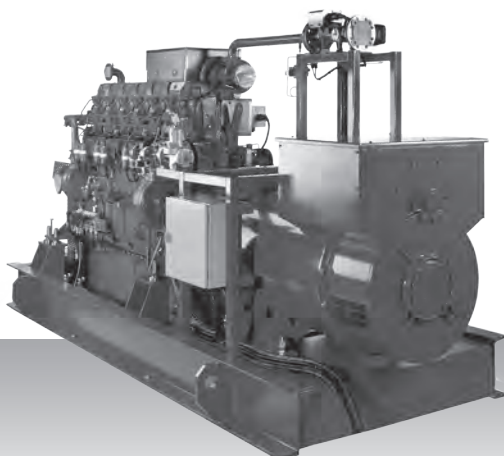
Gas generator set products*

Engine model	kVA	KWe	rpm	Hz	Page
50 Hz					
MAS-G 430	431	345	1,500	50	101
MAS-G 870	868	694	1,500	50	103
MAS-G 1160	1,157	925	1,500	50	104
MAS-G 1885	1,885	1,508	1,500	50	105
60 Hz					
MAS-G 430	374	299	1,200	60	101
MAS-G 470	468	375	1,200	60	102
MAS-G 870	750	607	1,200	60	103
MAS-G 1160	975	780	1,200	60	104
MAS-G 1885	1,200	960	1,200	60	105

* For gas direct propulsion fixed pitch propellor and controlable pitch propellor please contact Mitsubishi Turbocharger and Engine Europe B.V.

Gas generator set

MAS-G 430



Engine model GS6R-MPTK

Commercial rating

	kVA	kWe	rpm	Hz
Gas-electric propulsion	374	299	1,200	60
	431	345	1,500	50

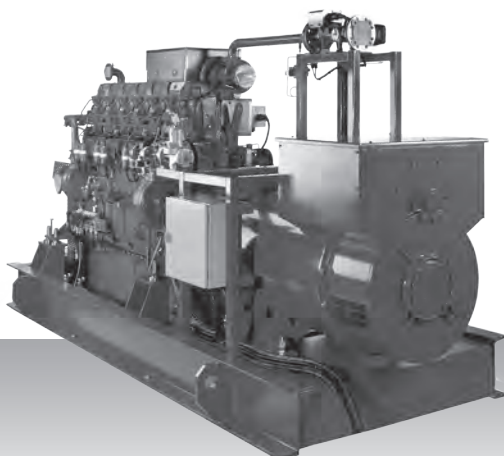
Specifications / data subject to change without prior notice.

Product dimensions & dry weight

L (mm) : 1,797
W (mm) : 1,088
H (mm) : 1,638
Dry weight (kg) : 2,400

Dimensions and weight are based on standard configuration.

MAS-G 470



Engine model GS6R2-MPTK

Commercial rating

	kVA	kWe	rpm	Hz
Gas-electric propulsion	468	375	1,200	60

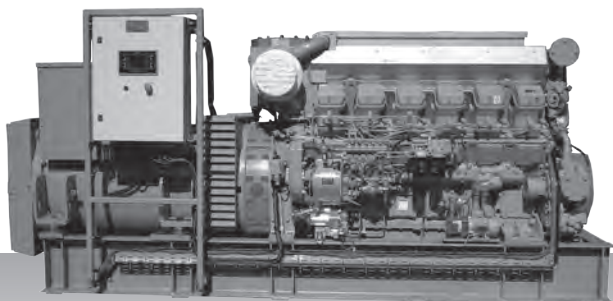
Specifications / data subject to change without prior notice.

Product dimensions & dry weight

L (mm) : 1,864
W (mm) : 1,063
H (mm) : 1,718
Dry weight (kg) : 2,650

Dimensions and weight are based on standard configuration.

MAS-G 870



Engine model GS12R-MPTK

Commercial rating

	kVA	kWe	rpm	Hz
Gas-electric propulsion	750	607	1,200	60
	868	694	1,500	50

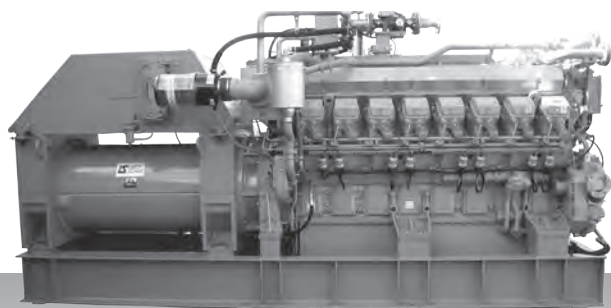
Specifications / data subject to change without prior notice.

Product dimensions & dry weight

L (mm) : 2,371
W (mm) : 1,820
H (mm) : 2,137
Dry weight (kg) : 5,375

Dimensions and weight are based on standard configuration.

MAS-G 1160



Engine model GS16R-MPTK

Commercial rating

	kVA	kWe	rpm	Hz
Gas-electric propulsion	975	780	1,200	60
	1,157	925	1,500	50

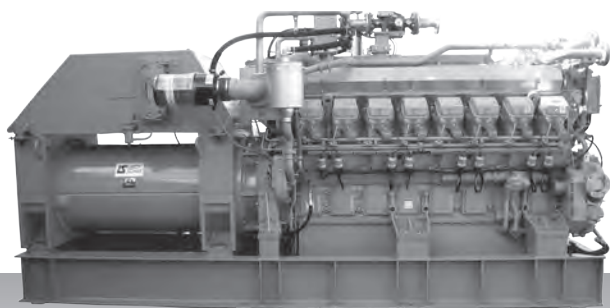
Specifications / data subject to change without prior notice.

Product dimensions & dry weight

L (mm) : 2,841
W (mm) : 1,820
H (mm) : 2,137
Dry weight (kg) : 6,800

Dimensions and weight are based on standard configuration.

MAS-G 1885



Engine model GS16R2-MPTK

Commercial rating

	kVA	kWe	rpm	Hz
Gas-electric propulsion	1,200	960	1,200	60
	1,885	1,508	1,500	50

Specifications / data subject to change without prior notice.

Product dimensions & dry weight

L (mm) : 3,423
W (mm) : 2,164
H (mm) : 2,122
Dry weight (kg) : 8,105

Dimensions and weight are based on standard configuration.