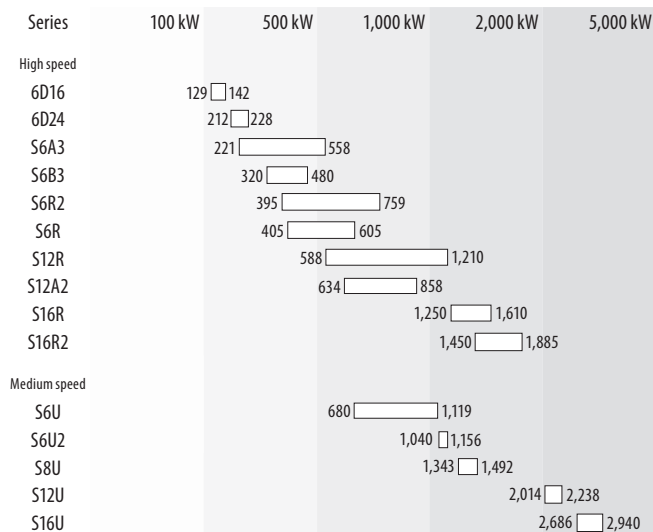


Propulsion specifications

ENGINE MODEL LINE-UP - MARINE PROPULSION



Propulsion products IMO Tier I / non emission - High speed

Engine model	kW	bhp	rpm	Rating	Emission	Page
Engine (without heat exchanger)						
6D16-T	129	173	2,700	HD	not regulated	13
6D16-T	142	190	2,700	HD	non emission	13
6D24-T	212	284	2,200	HD	non emission	14
6D24-TC	228	306	2,200	HD	non emission	14
S6B3-MPTK	345	462	1,940	UCD	IMO-T1	15
S6B3-MPTK	380	509	2,000	HD	IMO-T1	15
S6B3-MPTK	415	557	2,065	MD	IMO-T1	15
S6A3-MPTK	405	543	1,840	UCD	IMO-T1	16
S6A3-MPTK	445	597	1,900	HD	IMO-T1	16
S6A3-MPTK	490	657	1,960	MD	IMO-T1	16
S6R-MPTK	470	630	1,600	UCD	IMO-T1	17
S6R-MPTK	520	697	1,650	HD	IMO-T1	17
S6R-MPTK	605	811	1,800	MD	IMO-T1	17
S6R2-MPTK	480	643	1,350	UCD	IMO-T1	18
S6R2-MPTK	530	710	1,400	HD	IMO-T1	18
S6R2-MPTK	610	818	1,500	MD	IMO-T1	18
S12A2-MPTK	701	940	1,940	UCD	IMO-T1	19
S12A2-MPTK	776	1,040	2,000	HD	IMO-T1	19
S12A2-MPTK	858	1,150	2,100	MD	IMO-T1	19
S12R-MPTK	940	1,260	1,600	UCD	IMO-T1	20
S12R-MPTK	1,040	1,394	1,650	HD	IMO-T1	20
S12R-MPTK	1,210	1,622	1,800	MD	IMO-T1	20
S16R-MPTK	1,250	1,676	1,600	UCD	IMO-T1	21
S16R-MPTK	1,380	1,850	1,650	HD	IMO-T1	21
S16R-MPTK	1,610	2,158	1,800	MD	IMO-T1	21

Engine model	kW	bhp	rpm	Rating	Emission	Page
Propulsion package (with built-up heat exchanger and sea water pump)						
S6B3-MPTK	345	463	1,940	UCD	non emission	22
S6B3-MPTK	380	510	2,000	HD	non emission	22
S6A3-MPTK	368	494	1,840	UCD	non emission	23
S6A3-MPTK	405	543	1,840	UCD	non emission	23
S6A3-MPTK	445	597	1,900	HD	non emission	23
S6R-MPTK	405	543	1,600	UCD	non emission	24
S6R-MPTK	470	630	1,600	UCD	non emission	24
S6R-MPTK	520	697	1,650	HD	non emission	24

Propulsion products - IMO Tier II / CCNR-2 / EU-3A - High speed

Engine model	kW	bhp	rpm	Rating	Emission	Page
Engine (without heat exchanger)						
6D16-T	129	173	2,700	HD	not regulated for IMO-T2	25
6D24-TC	228	306	2,200	HD	on request	26
S6B3-T2MPTAW	320	429	1,940	UCD	IMO-T2	27
S6B3-T2MPTAW	350	469	2,000	HD	IMO-T2	27
S6A3-MPTAW	221	296	1,530	UCD	IMO-T2	28
S6A3-MPTAW	360	483	1,840	UCD	IMO-T2 / CCNR-2	28
S6A3-MPTAW	385	516	1,800	MD	CCNR-2	28
S6R-MPTAW	324	434	1,600	UCD	IMO-T2	29
S6R-MPTAW	447	599	1,600	UCD	IMO-T2	29
S6R-(Z3)MPTAW	470	630	1,600	UCD	IMO-T2 / EU-3A	29
S6R-MPTAW	520	697	1,650	HD	IMO-T2	29
S6R-(Z3)MPTAW	605	811	1,800	MD	IMO-T2 / EU-3A	29
S6R2-T2MPTK	395	530	1,350	UCD	IMO-T2	30
S6R2-T2MPTK	480	644	1,350	UCD	IMO-T2	30
S6R2-T2MPTK	530	711	1,400	HD	IMO-T2	30
S6R2-T2MPTK	610	818	1,500	MD	IMO-T2	30
S6R2-T2MPTAW3M	480	644	1,350	HD	IMO-T2	31
S6R2-T2MPTAW3M	555	744	1,350	HD	IMO-T2	31
S6R2-T2MPTAW3M	865	865	1,400	HD	IMO-T2	31
S6R2-T2MPTAW3M	927	927	1,400	HD	IMO-T2	31
S12A2-C2MPTK	634	850	1,940	UCD	IMO-T2 / CCNR-2	32
S12A2-(Z3)MPTAW	701	940	1,940	UCD	IMO-T2 / EU-3A	33
S12A2-MPTAW	776	1,041	2,000	HD	IMO-T2	33
S12R-MPTAW	588	789	1,400	UCD	IMO-T2	34
S12R-MPTAW	696	933	1,500	UCD	IMO-T2	34
S12R-MPTAW	749	1,004	1,500	UCD	IMO-T2	34
S12R-MPTAW	749	1,004	1,600	UCD	IMO-T2	34
S12R-(Z3)MPTAW	940	1,261	1,600	UCD	IMO-T2 / EU-3A	34
S12R-MPTAW	1,040	1,395	1,650	HD	IMO-T2	34
S16R-(Z3)MPTAW	1,250	1,676	1,600	UCD	IMO-T2 / EU-3A	35
S16R-MPTAW	1,380	1,851	1,650	HD	IMO-T2	35
S16R2-T2MPTAW	1,450	1,944	1,350	UCD	IMO-T2	36
S16R2-T2MPTAW	1,600	2,146	1,400	HD	IMO-T2	36
S16R2-T2MPTAW	1,885	2,528	1,500	MD	IMO-T2	36

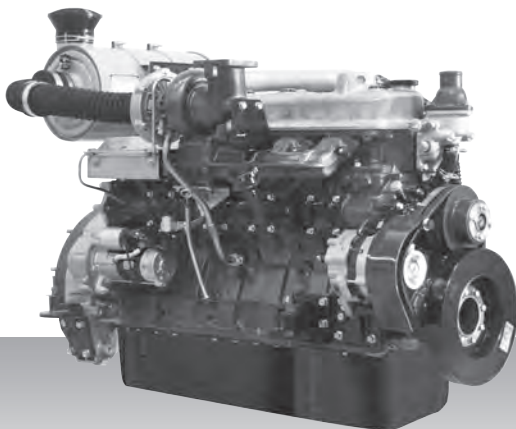
Engine model	kW	bhp	rpm	Rating	Emission	Page
Propulsion package (with built-up heat exchanger and sea water pump)						
S6B3-T2MPTK2	378	507	2,001	HD	IMO-T2	37
S6B3-T2MPTK2	448	601	2,001	MD	IMO-T2	37
S6A3-T2MPTK3	502	673	1,900	HD	IMO-T2	38
S6A3-T2MPTK3	558	748	1,900	MD	IMO-T2	38
S6R-T2MPTK	470	630	1,600	UCD	IMO-T2	39
S6R-T2MPTK	520	697	1,650	HD	IMO-T2	39
S6R-T2MPTK	605	811	1,800	MD	IMO-T2	39
S6R2-T2MPTK	480	643	1,350	UCD	IMO-T2	40
S6R2-T2MPTK	530	711	1,400	HD	IMO-T2	40
S6R2-T2MPTK	610	818	1,500	MD	IMO-T2	40
S6R2-T2MPTK3	691	927	1,406	HD	IMO-T2	41
S6R2-T2MPTK3	759	1,018	1,406	MD	IMO-T2	41
S12A2-T2MPTK	701	940	1,800	UCD	IMO-T2	42
S12A2-T2MPTK	776	1,041	1,860	HD	IMO-T2	42
S12A2-T2MPTK	858	1,151	1,920	MD	IMO-T2	42
S12R-T2MPTK	940	1,261	1,600	UCD	IMO-T2	43
S12R-T2MPTK	1,040	1,395	1,650	HD	IMO-T2	43
S12R-T2MPTK	1,210	1,623	1,800	MD	IMO-T2	43
S16R-T2MPTK	1,250	1,676	1,600	UCD	IMO-T2	44
S16R-T2MPTK	1,380	1,851	1,650	HD	IMO-T2	44
S16R-T2MPTK	1,610	2,159	1,800	MD	IMO-T2	44
S16R2-T2MPTK	1,450	1,944	1,350	UCD	IMO-T2	45
S16R2-T2MPTK	1,600	2,156	1,400	HD	IMO-T2	45
S16R2-T2MPTK	1,885	2,528	1,500	MD	IMO-T2	45

Propulsion products - IMO Tier II / CCNR-2 - Medium speed

Engine model	kW	bhp	rpm	Rating	Emission	Page
S6U-C2MPTK	680	912	1,100	UCD	IMO-T2	46
S6U-C2MPTK	719	964	1,100	UCD	IMO-T2	46
S6U-C2MPTK	749	1,004	1,100	UCD	IMO-T2	46
S6U-C2MPTK	1,007	1,350	1,060	UCD	IMO-T2 / CCNR-2	46
S6U-C2MPTK	1,103	1,479	1,150	HD-T	IMO-T2 / CCNR-2	46
S6U-C2MPTK	1,119	1,499	1,100	HD	IMO-T2 / CCNR-2	46
S6U2-MPTK	1,040	1,395	930	UCD	IMO-T2 / CCNR-2	47
S6U2-MPTK	1,156	1,550	960	HD	IMO-T2 / CCNR-2	47
S8U-C2MPTK	1,343	1,801	1,060	UCD	IMO-T2 / CCNR-2	48
S8U-C2MPTK	1,470	1,971	1,150	HD-T	IMO-T2 / CCNR-2	48
S8U-C2MPTK	1,492	2,001	1,100	HD	IMO-T2 / CCNR-2	48
S12U-MPTK	2,014	2,701	1,060	UCD	IMO-T2	49
S12U-MPTK	2,205	2,957	1,150	HD-T	IMO-T2	49
S12U-MPTK	2,238	3,001	1,100	HD	IMO-T2	49
S16U-MPTK	2,686	3,602	1,060	UCD	IMO-T2	50
S16U-MPTK	2,940	3,943	1,150	HD-T	IMO-T2	50
S16U-MPTK	2,984	4,002	1,100	HD	IMO-T2	50

Propulsion - IMO Tier I / non emission
High speed - Engine

6D16-T



6-cylinder, 4-cycle, water cooled diesel engine,
with direct-injection, turbocharger and air-cooler.

Bore x stroke (mm) : 118 x 115

Displacement (l) : 7.54

Commercial rating

kW	bhp	rpm	Rating	Fuel cons. l/hr*	Emission
129	173	2,700	HD	on request	not regulated
142	190	2,700	HD	30.5	non emission

*Average fuel consumption according to ISO, see page 6.
Specifications / data subject to change without prior notice.

Product dimensions & dry weight

L (mm) : 1,335

W (mm) : 731

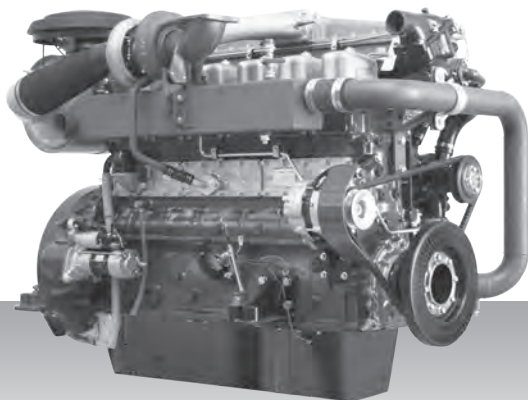
H (mm) : 830

Dry weight (kg) : 575

Dimensions and weight are based on standard configuration.

Propulsion - IMO Tier I / non emission
High speed - Engine

6D24-T(C)



6-cylinder, 4-cycle, water cooled diesel engine,
with direct-injection, turbocharger and air-cooler.

Bore x stroke (mm) : 130 x 150

Displacement (l) : 11.95

Commercial rating

kW	bhp	rpm	Rating	Fuel cons. l/hr*	Emission
212	284	2,200	HD	42.6	non emission
228	306	2,200	HD	on request	non emission

*Average fuel consumption according to ISO, see page 6.
Specifications / data subject to change without prior notice.

Product dimensions & dry weight

L (mm) : 1,535

W (mm) : 880

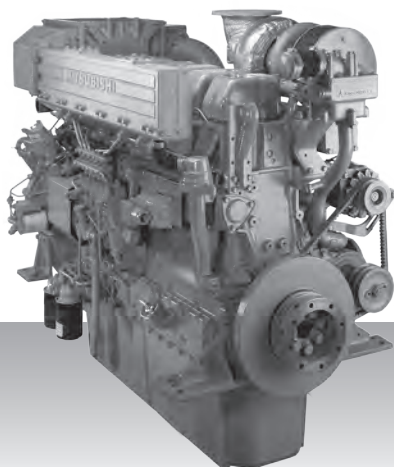
H (mm) : 1,235

Dry weight (kg) : 1,209

Dimensions and weight are based on standard configuration.

**Propulsion - IMO Tier I / non emission
High speed - Engine**

S6B3-MPTK



6-cylinder, 4-cycle, water cooled diesel engine,
with direct-injection, turbocharger and air-cooler.

Bore x stroke (mm) : 135 x 170

Displacement (l) : 14.60

Commercial rating

kW	bhp	rpm	Rating	Fuel cons. l/hr*	Emission
345	463	1,940	UCD	59.6	IMO-T1
380	510	2,000	HD	68.0	IMO-T1
415	557	2,065	MD	on request	IMO-T1

*Average fuel consumption according to ISO, see page 6.
Specifications / data subject to change without prior notice.

Product dimensions & dry weight

L (mm) : 1,834

W (mm) : 873

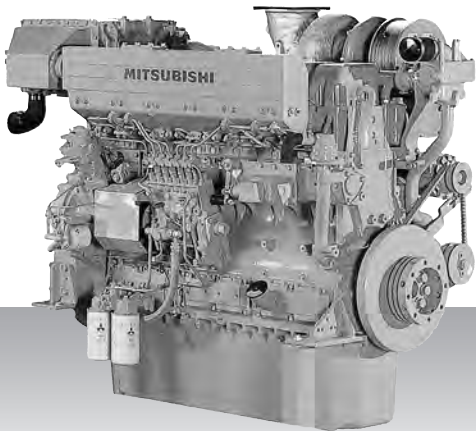
H (mm) : 1,331

Dry weight (kg) : 1,300

Dimensions and weight are based on standard configuration.

Propulsion - IMO Tier I / non emission
High speed - Engine

S6A3-MPTK



6-cylinder, 4-cycle, water cooled diesel engine,
with direct-injection, turbocharger and air-cooler.

Bore x stroke (mm) : 150 x 175
Displacement (l) : 18.56

Commercial rating

kW	bhp	rpm	Rating	Fuel cons. l/hr*	Emission
405	543	1,840	UCD	69.8	IMO-T1
445	597	1,900	HD	78.3	IMO-T1
490	657	1,960	MD	85.9	IMO-T1

*Average fuel consumption according to ISO, see page 6.
Specifications / data subject to change without prior notice.

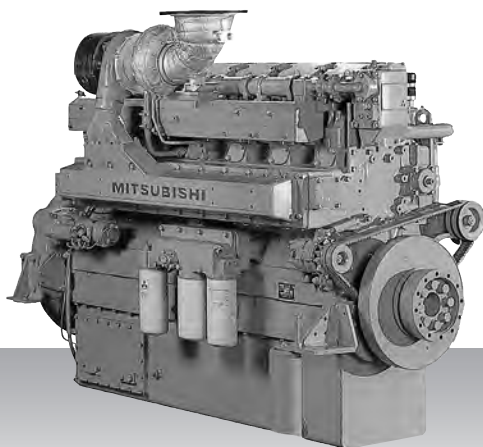
Product dimensions & dry weight

L (mm) : 2,037
W (mm) : 927
H (mm) : 1,371
Dry weight (kg) : 1,900

Dimensions and weight are based on standard configuration.

Propulsion - IMO Tier I / non emission
High speed - Engine

S6R-MPTK



6-cylinder, 4-cycle, water cooled diesel engine,
with direct-injection, turbocharger and air-cooler.

Bore x stroke (mm) : 170 x 180

Displacement (l) : 24.51

Commercial rating

kW	bhp	rpm	Rating	Fuel cons. l/hr*	Emission
470	630	1,600	UCD	79.0	IMO-T1
520	697	1,650	HD	87.9	IMO-T1
605	811	1,800	MD	101.3	IMO-T1

*Average fuel consumption according to ISO, see page 6.
Specifications / data subject to change without prior notice.

Product dimensions & dry weight

L (mm) : 1,811

W (mm) : 1,108

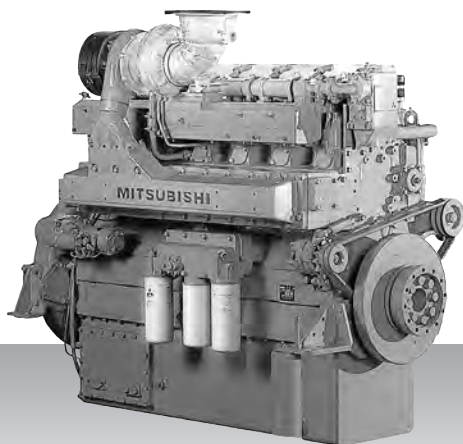
H (mm) : 1,614

Dry weight (kg) : 2,830

Dimensions and weight are based on standard configuration.

Propulsion - IMO Tier I / non emission
High speed - Engine

S6R2-MPTK



6-cylinder, 4-cycle, water cooled diesel engine,
with direct-injection, turbocharger and air-cooler.

Bore x stroke (mm) : 170 x 220

Displacement (l) : 29.96

Commercial rating

kW	bhp	rpm	Rating	Fuel cons. l/hr*	Emission
480	644	1,350	UCD	78.9	IMO-T1
530	711	1,400	HD	86.6	IMO-T1
610	818	1,500	MD	100.4	IMO-T1

*Average fuel consumption according to ISO, see page 6.
Specifications / data subject to change without prior notice.

Product dimensions & dry weight

L (mm) : 1,811

W (mm) : 1,108

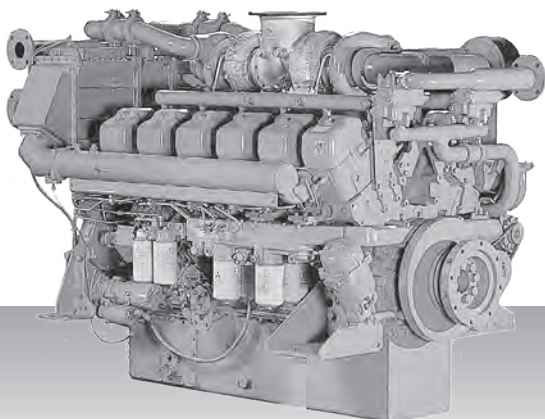
H (mm) : 1,694

Dry weight (kg) : 2,960

Dimensions and weight are based on standard configuration.

**Propulsion - IMO Tier I / non emission
High speed - Engine**

S12A2-MPTK



6-cylinder, 4-cycle, water cooled diesel engine,
with direct-injection, turbocharger and air-cooler.

Bore x stroke (mm) : 150 x 160

Displacement (l) : 33.93

Commercial rating

kW	bhp	rpm	Rating	Fuel cons. l/hr*	Emission
701	940	1,940	UCD	122.3	IMO-T1
776	1,041	2,000	HD	136.6	IMO-T1
858	1,151	2,100	MD	152.7	IMO-T1

*Average fuel consumption according to ISO, see page 6.
Specifications / data subject to change without prior notice.

Product dimensions & dry weight

L (mm) : 2,291

W (mm) : 1,418

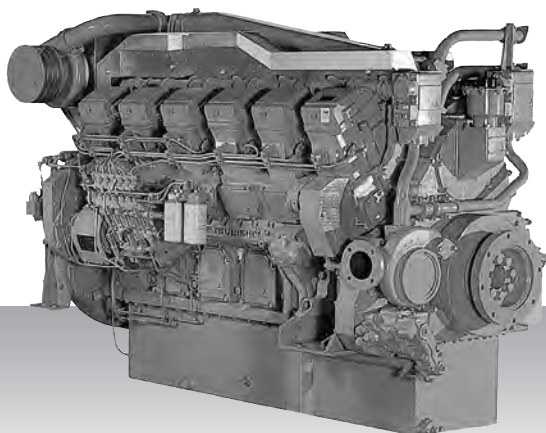
H (mm) : 1,596

Dry weight (kg) : 3,720

Dimensions and weight are based on standard configuration.

Propulsion - IMO Tier I / non emission
High speed - Engine

S12R-MPTK



12-cylinder, 4-cycle, water cooled diesel engine,
with direct-injection, turbocharger and air-cooler.

Bore x stroke (mm) : 170 x 180

Displacement (l) : 49.03

Commercial rating

kW	bhp	rpm	Rating	Fuel cons. l/hr*	Emission
940	1,261	1,600	UCD	158.0	IMO-T1
1,040	1,395	1,650	HD	176.5	IMO-T1
1,210	1,623	1,800	MD	202.9	IMO-T1

*Average fuel consumption according to ISO, see page 6.
Specifications / data subject to change without prior notice.

Product dimensions & dry weight

L (mm) : 2,376

W (mm) : 1,512

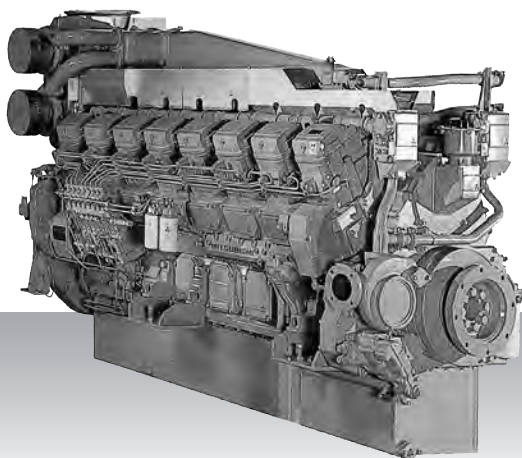
H (mm) : 1,731

Dry weight (kg) : 5,320

Dimensions and weight are based on standard configuration.

Propulsion - IMO Tier I / non emission
High speed - Engine

S16R-MPTK



16-cylinder, 4-cycle, water cooled diesel engine,
with direct-injection, turbocharger and air-cooler.

Bore x stroke (mm) : 170 x 180

Displacement (l) : 65.37

Commercial rating

kW	bhp	rpm	Rating	Fuel cons. l/hr*	Emission
1,250	1,676	1,600	UCD	206.0	IMO-T1
1,380	1,851	1,650	HD	234.4	IMO-T1
1,610	2,159	1,800	MD	268.7	IMO-T1

*Average fuel consumption according to ISO, see page 6.
Specifications / data subject to change without prior notice.

Product dimensions & dry weight

L (mm) : 2,931

W (mm) : 1,512

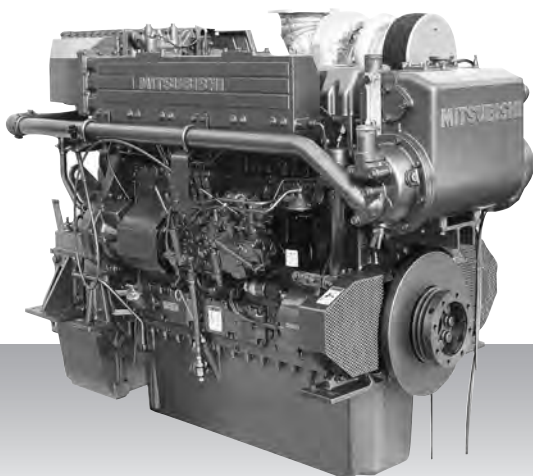
H (mm) : 1,960

Dry weight (kg) : 6,780

Dimensions and weight are based on standard configuration.

Propulsion - IMO Tier I / non emission
High speed - Propulsion package

S6B3-MPTK



6-cylinder, 4-cycle, water cooled diesel engine,
with direct-injection, turbocharger, air-cooler,
build-up heat exchanger and sea water pump.

Bore x stroke (mm) : 135 x 170
Displacement (l) : 14.60

Commercial rating

kW	bhp	rpm	Rating	Fuel cons. l/hr*	Emission
345	463	1,940	UCD	on request	non emission
380	510	2,000	HD	on request	non emission

*Average fuel consumption according to ISO, see page 6.
Specifications / data subject to change without prior notice.

Product dimensions & dry weight

L (mm) : 1,967
W (mm) : 984
H (mm) : 1,330
Dry weight (kg) : 1,400

Dimensions and weight are based on standard configuration.

Propulsion - IMO Tier I / non emission
High speed - Propulsion package

S6A3-MPTK



6-cylinder, 4-cycle, water cooled diesel engine,
with direct-injection, turbocharger, air-cooler,
build-up heat exchanger and sea water pump.

Bore x stroke (mm) : 150 x 175

Displacement (l) : 18.50

Commercial rating

kW	bhp	rpm	Rating	Fuel cons. l/hr*	Emission
368	493	1,840	UCD	on request	non emission
405	543	1,840	UCD	on request	non emission
445	597	1,900	HD	on request	non emission

*Average fuel consumption according to ISO, see page 6.
Specifications / data subject to change without prior notice.

Product dimensions & dry weight

L (mm) : 2,189

W (mm) : 1,127

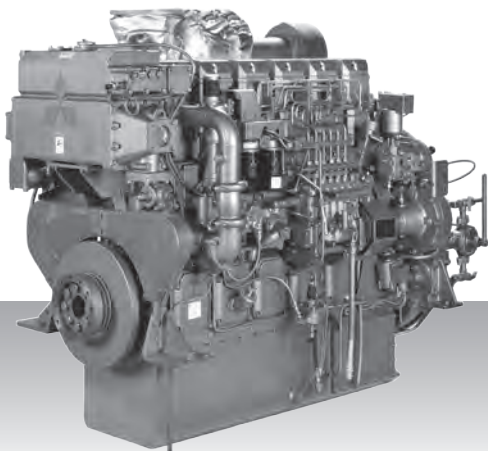
H (mm) : 1,421

Dry weight (kg) : 2,100

Dimensions and weight are based on standard configuration.

Propulsion - IMO Tier I / non emission
High speed - Propulsion package

S6R-MPTK



6-cylinder, 4-cycle, water cooled diesel engine,
with direct-injection, turbocharger, air-cooler,
build-up heat exchanger and sea water pump.

Bore x stroke (mm) : 170 x 180
Displacement (l) : 24.51

Commercial rating

kW	bhp	rpm	Rating	Fuel cons. l/hr*	Emission
405	543	1,600	UCD	on request	non emission
470	630	1,600	UCD	on request	non emission
520	697	1,650	HD	on request	non emission

*Average fuel consumption according to ISO, see page 6.
Specifications / data subject to change without prior notice.

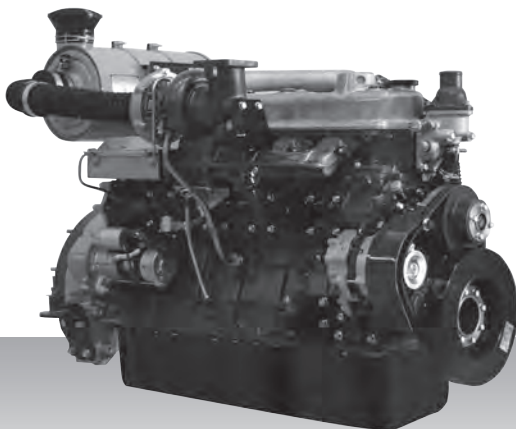
Product dimensions & dry weight

L (mm) : 2,122
W (mm) : 1,202
H (mm) : 1,615
Dry weight (kg) : 2,950

Dimensions and weight are based on standard configuration.

Propulsion - IMO Tier II / CCNR-2 / EU-3A
High speed - Engine

6D16-T



6-cylinder, 4-cycle, water cooled diesel engine,
with direct-injection, turbocharger and air-cooler.

Bore x stroke (mm) : 118 x 115
Displacement (l) : 7.54

Commercial rating

kW	bhp	rpm	Rating	Fuel cons. l/hr*	Emission
129	173	2,700	HD	on request	not regulated for IMO-T2

*Average fuel consumption according to ISO, see page 6.
Specifications / data subject to change without prior notice.

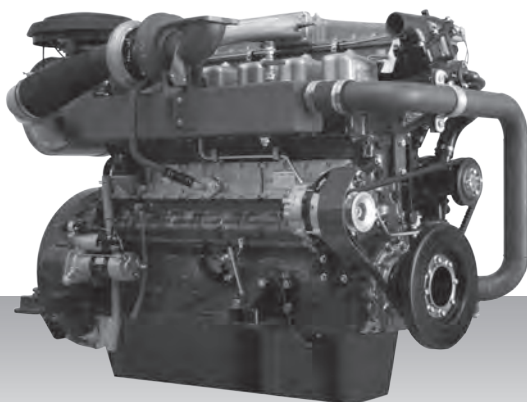
Product dimensions & dry weight

L (mm) : 1,335
W (mm) : 731
H (mm) : 830
Dry weight (kg) : 575

Dimensions and weight are based on standard configuration.

Propulsion - IMO Tier II / CCNR-2 / EU-3A
High speed - Engine

6D24-TC



6-cylinder, 4-cycle, water cooled diesel engine,
with direct-injection, turbocharger and air-cooler.

Bore x stroke (mm) : 130 x 150

Displacement (l) : 11.95

Commercial rating

kW	bhp	rpm	Rating	Fuel cons. l/hr*	Emission
228	306	2,200	HD	on request	on request

*Average fuel consumption according to ISO, see page 6.
Specifications / data subject to change without prior notice.

Product dimensions & dry weight

L (mm) : 1,535

W (mm) : 880

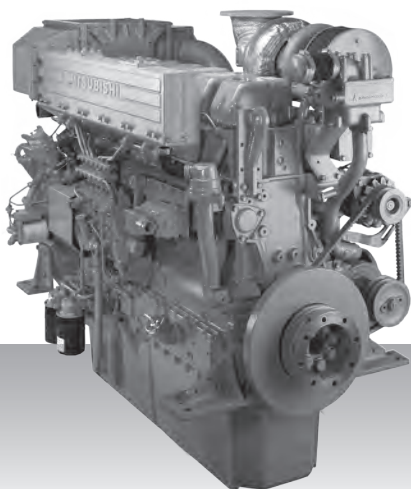
H (mm) : 1,235

Dry weight (kg) : 1,209

Dimensions and weight are based on standard configuration.

Propulsion - IMO Tier II / CCNR-2 / EU-3A
High speed - Engine

S6B3-T2MPTAW



6-cylinder, 4-cycle, water cooled diesel engine,
with direct-injection, turbocharger and air-cooler.

Bore x stroke (mm) : 135 x 170

Displacement (l) : 14.60

Commercial rating

kW	bhp	rpm	Rating	Fuel cons. l/hr*	Emission
320	429	1,940	UCD	on request	IMO-T2
350	469	2,000	HD	on request	IMO-T2

*Average fuel consumption according to ISO, see page 6.
Specifications / data subject to change without prior notice.

Product dimensions & dry weight

L (mm) : 1,465

W (mm) : 873

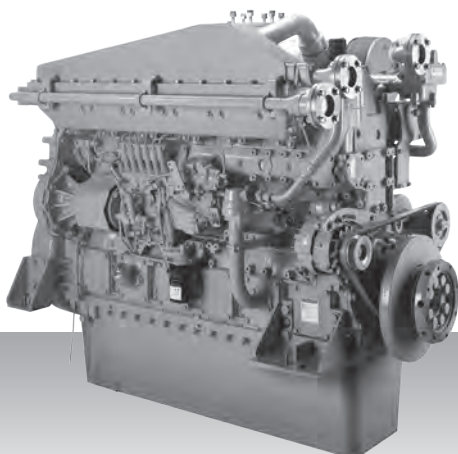
H (mm) : 1,331

Dry weight (kg) : 1,300

Dimensions and weight are based on standard configuration.

**Propulsion - IMO Tier II / CCNR-2 / EU-3A
High speed - Engine**

S6A3-MPTAW



6-cylinder, 4-cycle, water cooled diesel engine,
with direct-injection, turbocharger and air-cooler.

Bore x stroke (mm) : 150 x 175

Displacement (l) : 18.56

Commercial rating

kW	bhp	rpm	Rating	Fuel cons. l/hr*	Emission
221	296	1,530	UCD	on request	IMO-T2
360	483	1,840	UCD	65.7	IMO-T2 / CCNR-2
385	516	1,800	MD	on request	CCNR-2

*Average fuel consumption according to ISO, see page 6.
Specifications / data subject to change without prior notice.

Product dimensions & dry weight

L (mm) : 1,636

W (mm) : 1,036

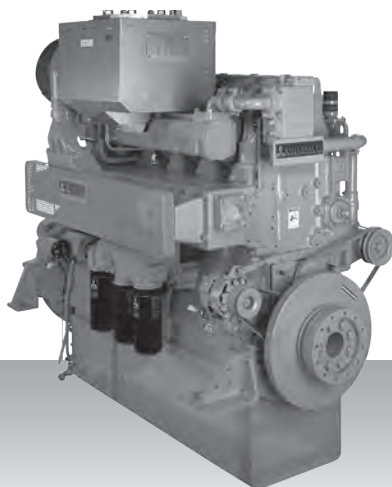
H (mm) : 1,421

Dry weight (kg) : 1,900

Dimensions and weight are based on standard configuration.

Propulsion - IMO Tier II / CCNR-2 / EU-3A
High speed - Engine

S6R-(Z3)MPTAW



6-cylinder, 4-cycle, water cooled diesel engine,
with direct-injection, turbocharger and air-cooler.

Bore x stroke (mm) : 170 x 180

Displacement (l) : 24.51

Commercial rating

kW	bhp	rpm	Rating	Fuel cons. l/hr*	Emission
324	434	1,600	UCD	on request	IMO-T2
447	599	1,600	UCD	on request	IMO-T2
470	630	1,600	UCD	80.5	IMO-T2 / EU-3A
520	697	1,650	HD	89.0	IMO-T2 / EU-3A
605	811	1,800	MD	on request	IMO-T2 / EU-3A

*Average fuel consumption according to ISO, see page 6.
Specifications / data subject to change without prior notice.

Product dimensions & dry weight

L (mm) : 1,786

W (mm) : 1,220

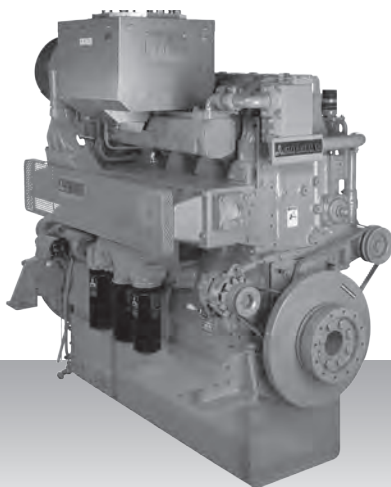
H (mm) : 1,650

Dry weight (kg) : 2,913

Dimensions and weight are based on standard configuration.

**Propulsion - IMO Tier II / CCNR-2 / EU-3A
High speed - Engine**

S6R2-T2MPTK



6-cylinder, 4-cycle, water cooled diesel engine,
with direct-injection, turbocharger and air-cooler.

Bore x stroke (mm) : 170 x 220

Displacement (l) : 29.96

Commercial rating

kW	bhp	rpm	Rating	Fuel cons. l/hr*	Emission
324	435	1,350	UCD	on request	IMO-T2
380	510	1,350	UCD	on request	IMO-T2
395	530	1,350	UCD	on request	IMO-T2
423	567	1,350	UCD	on request	IMO-T2
480	644	1,350	UCD	79.9	IMO-T2
530	711	1,400	HD	88.7	IMO-T2
610	818	1,500	MD	101.5	IMO-T2

*Average fuel consumption according to ISO, see page 6.
Specifications / data subject to change without prior notice.

Product dimensions & dry weight

L (mm) : 2,207

W (mm) : 1,156

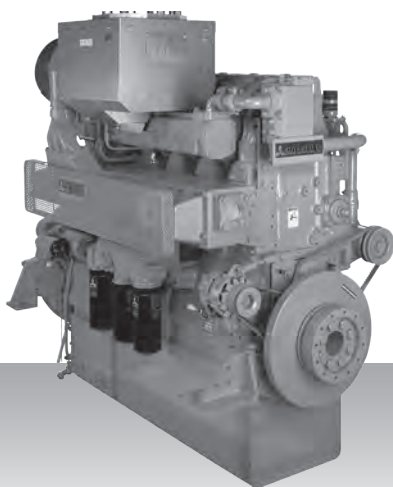
H (mm) : 1,695

Dry weight (kg) : 3,000

Dimensions and weight are based on standard configuration.

**Propulsion - IMO Tier II / CCNR-2 / EU-3A
High speed - Engine**

S6R2-T2MPTAW3M



6-cylinder, 4-cycle, water cooled diesel engine,
with direct-injection, turbocharger and air-cooler.

Bore x stroke (mm) : 170 x 220

Displacement (l) : 29.96

Commercial rating

kW	bhp	rpm	Rating	Fuel cons. l/hr*	Emission
480	644	1,350	HD	on request	IMO-T2
555	744	1,350	HD	on request	IMO-T2
645	865	1,400	HD	on request	IMO-T2
691	927	1,406	HD	on request	IMO-T2

*Average fuel consumption according to ISO, see page 6.
Specifications / data subject to change without prior notice.

Product dimensions & dry weight

L (mm) : 1,786

W (mm) : 1,220

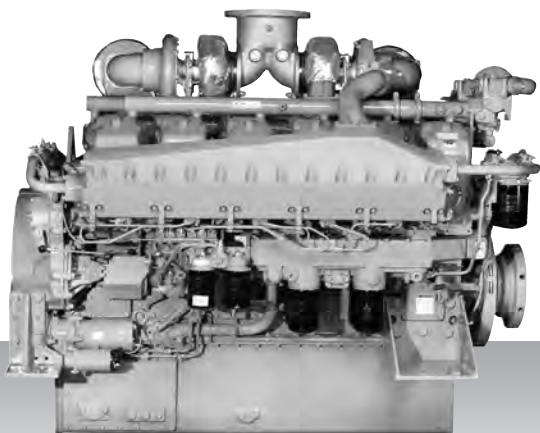
H (mm) : 1,650

Dry weight (kg) : 2,913

Dimensions and weight are based on standard configuration.

Propulsion - IMO Tier II / CCNR-2 / EU-3A
High speed - Engine

S12A2-C2MPTK



12-cylinder, 4-cycle, water cooled diesel engine,
with direct-injection, turbocharger and air-cooler.

Bore x stroke (mm) : 150 x 160

Displacement (l) : 33.93

Commercial rating

kW	bhp	rpm	Rating	Fuel cons. l/hr*	Emission
634	850	1,940	UCD	111.9	IMO-T2 / CCNR-2

*Average fuel consumption according to ISO, see page 6.
Specifications / data subject to change without prior notice.

Product dimensions & dry weight

L (mm) : 1,948

W (mm) : 1,442

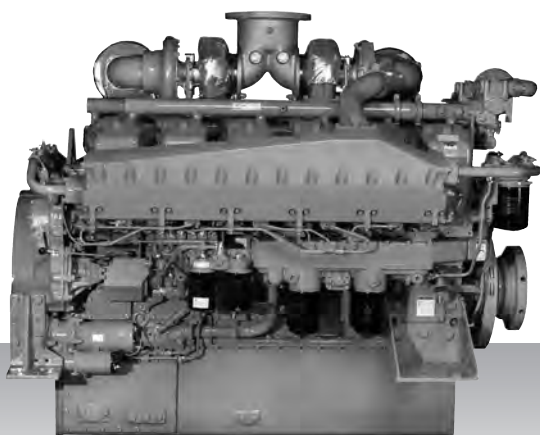
H (mm) : 1,596

Dry weight (kg) : 3,380

Dimensions and weight are based on standard configuration.

Propulsion - IMO Tier II / CCNR-2 / EU-3A
High speed - Engine

S12A2-(Z3)MPTAW



12-cylinder, 4-cycle, water cooled diesel engine,
with direct-injection, turbocharger and air-cooler.

Bore x stroke (mm) : 150 x 160

Displacement (l) : 33.93

Commercial rating

kW	bhp	rpm	Rating	Fuel cons. l/hr*	Emission
701	940	1,940	UCD	119.0	IMO-T2 / EU-3A
776	1,041	2,000	HD	131.5	IMO-T2

*Average fuel consumption according to ISO, see page 6.
Specifications / data subject to change without prior notice.

Product dimensions & dry weight

L (mm) : 2,059

W (mm) : 1,654

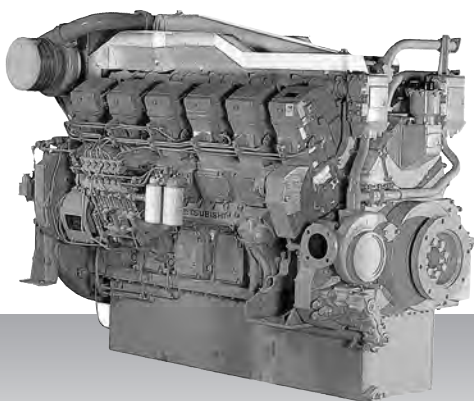
H (mm) : 1,596

Dry weight (kg) : 3,840

Dimensions and weight are based on standard configuration.

Propulsion - IMO Tier II / CCNR-2 / EU-3A
High speed - Engine

S12R-(Z3)MPTAW



12-cylinder, 4-cycle, water cooled diesel engine,
with direct-injection, turbocharger and air-cooler.

Bore x stroke (mm) : 170 x 180

Displacement (l) : 49.03

Commercial rating

kW	bhp	rpm	Rating	Fuel cons. l/hr*	Emission
588	789	1,400	UCD	on request	IMO-T2
696	933	1,500	UCD	on request	IMO-T2
749	1,004	1,500	UCD	on request	IMO-T2
749	1,004	1,600	UCD	on request	IMO-T2
940	1,261	1,600	UCD	160.5	IMO-T2 / EU-3A
1,040	1,395	1,650	HD	178.7	IMO-T2 / EU-3A

*Average fuel consumption according to ISO, see page 6.
Specifications / data subject to change without prior notice.

Product dimensions & dry weight

L (mm) : 2,416

W (mm) : 1,585

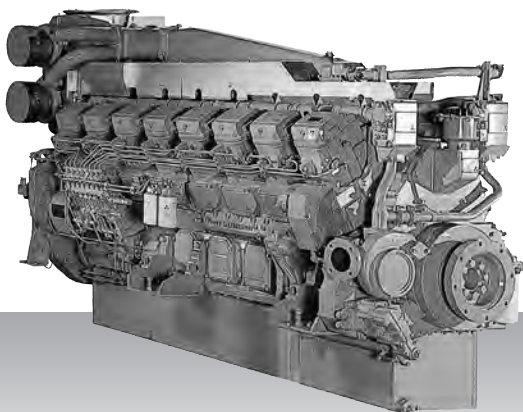
H (mm) : 1,807

Dry weight (kg) : 5,470

Dimensions and weight are based on standard configuration.

Propulsion - IMO Tier II / CCNR-2 / EU-3A
High speed - Engine

S16R-(Z3)MPTAW



16-cylinder, 4-cycle, water cooled diesel engine,
with direct-injection, turbocharger and air-cooler.

Bore x stroke (mm) : 170 x 180

Displacement (l) : 65.37

Commercial rating

kW	bhp	rpm	Rating	Fuel cons. l/hr*	Emission
1,250	1,676	1,600	UCD	214.1	IMO-T2 / EU-3A
1,380	1,851	1,650	HD	236.6	IMO-T2

*Average fuel consumption according to ISO, see page 6.
Specifications / data subject to change without prior notice.

Product dimensions & dry weight

L (mm) : 2,971

W (mm) : 1,585

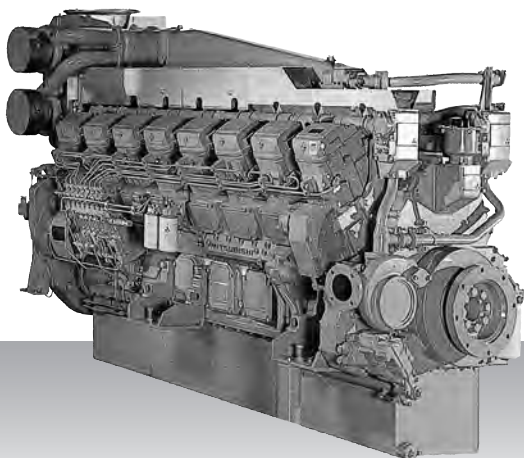
H (mm) : 1,960

Dry weight (kg) : 6,950

Dimensions and weight are based on standard configuration.

**Propulsion - IMO Tier II / CCNR-2 / EU-3A
High speed - Engine**

S16R2-T2MPTAW



16-cylinder, 4-cycle, water cooled diesel engine,
with direct-injection, turbocharger and air-cooler.

Bore x stroke (mm) : 170 x 220

Displacement (l) : 79.90

Commercial rating

kW	bhp	rpm	Rating	Fuel cons. l/hr*	Emission
1,450	1,944	1,350	UCD	on request	IMO-T2
1,600	2,146	1,400	HD	287.9	IMO-T2
1,885	2,528	1,500	MD	on request	IMO-T2

*Average fuel consumption according to ISO, see page 6.
Specifications / data subject to change without prior notice.

Product dimensions & dry weight

L (mm) : 2,946

W (mm) : 1,525

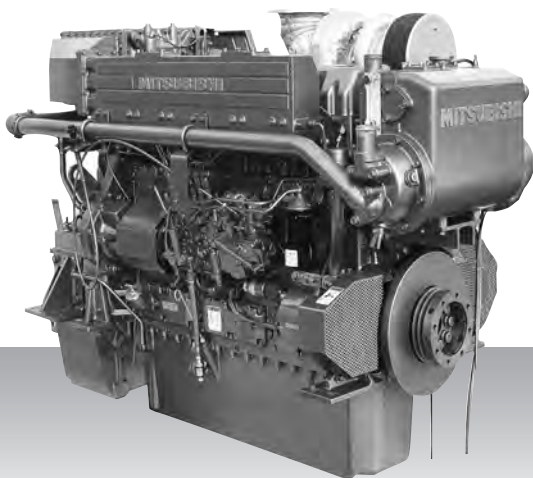
H (mm) : 2,030

Dry weight (kg) : 7,750

Dimensions and weight are based on standard configuration.

Propulsion - IMO Tier II / CCNR-2 / EU-3A
High speed - Propulsion package

S6B3-T2MPTK2



6-cylinder, 4-cycle, water cooled diesel engine,
with direct-injection, turbocharger, air-cooler,
built-up heat exchanger and sea water pump.

Bore x stroke (mm) : 135 x 170
Displacement (l) : 14.60

Commercial rating

kW	bhp	rpm	Rating	Fuel cons. l/hr*	Emission
378	507	2,001	HD	on request	IMO-T2
448	601	2,001	MD	77.9	IMO-T2

*Average fuel consumption according to ISO, see page 6.
Specifications / data subject to change without prior notice.

Product dimensions & dry weight

L (mm) : 1,967
W (mm) : 984
H (mm) : 1,330
Dry weight (kg) : 1,400

Dimensions and weight are based on standard configuration.

Propulsion - IMO Tier II / CCNR-2 / EU-3A
High speed - Propulsion package

S6A3-T2MPTK3



6-cylinder, 4-cycle, water cooled diesel engine,
with direct-injection, turbocharger, air-cooler,
built-up heat exchanger and sea water pump.

Bore x stroke (mm) : 150 x 175
Displacement (l) : 18.50

Commercial rating

kW	bhp	rpm	Rating	Fuel cons. l/hr*	Emission
502	673	1,900	HD	on request	IMO-T2
558	748	1,900	MD	on request	IMO-T2

*Average fuel consumption according to ISO, see page 6.
Specifications / data subject to change without prior notice.

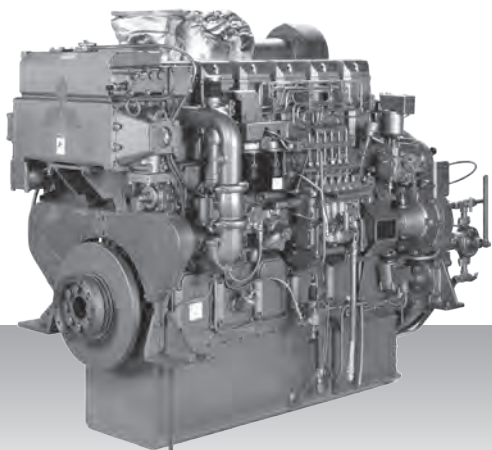
Product dimensions & dry weight

L (mm) : 2,189
W (mm) : 1,127
H (mm) : 1,421
Dry weight (kg) : 2,100

Dimensions and weight are based on standard configuration.

Propulsion - IMO Tier II / CCNR-2 / EU-3A
High speed - Propulsion package

S6R-T2MPTK



6-cylinder, 4-cycle, water cooled diesel engine,
with direct-injection, turbocharger, air-cooler,
built-up heat exchanger and sea water pump.

Bore x stroke (mm) : 170 x 180
Displacement (l) : 24.51

Commercial rating

kW	bhp	rpm	Rating	Fuel cons. l/hr*	Emission
470	630	1,600	UCD	79.6	IMO-T2
520	697	1,650	HD	88.6	IMO-T2
605	811	1,800	MD	103.8	IMO-T2

*Average fuel consumption according to ISO, see page 6.
Specifications / data subject to change without prior notice.

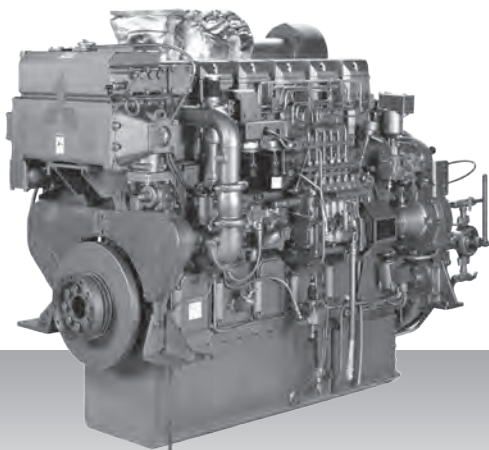
Product dimensions & dry weight

L (mm) : 2,122
W (mm) : 1,202
H (mm) : 1,615
Dry weight (kg) : 2,950

Dimensions and weight are based on standard configuration.

Propulsion - IMO Tier II / CCNR-2 / EU-3A
High speed - Propulsion package

S6R2-T2MPTK



6-cylinder, 4-cycle, water cooled diesel engine,
with direct-injection, turbocharger, air-cooler,
built-up heat exchanger and sea water pump.

Bore x stroke (mm) : 170 x 220
Displacement (l) : 29.96

Commercial rating

kW	bhp	rpm	Rating	Fuel cons. l/hr*	Emission
480	643	1,350	UCD	79.9	IMO-T2
530	711	1,400	HD	88.7	IMO-T2
610	818	1,500	MD	101.5	IMO-T2

*Average fuel consumption according to ISO, see page 6.
Specifications / data subject to change without prior notice.

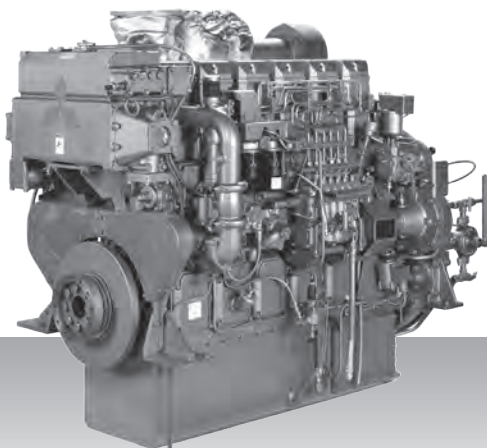
Product dimensions & dry weight

L (mm) : 2,207
W (mm) : 1,156
H (mm) : 1,695
Dry weight (kg) : 3,000

Dimensions and weight are based on standard configuration.

Propulsion - IMO Tier II / CCNR-2 / EU-3A
High speed - Propulsion package

S6R2-T2MPTK3



6-cylinder, 4-cycle, water cooled diesel engine,
with direct-injection, turbocharger, air-cooler,
built-up heat exchanger and sea water pump.

Bore x stroke (mm) : 170 x 220
Displacement (l) : 29.96

Commercial rating

kW	bhp	rpm	Rating	Fuel cons. l/hr*	Emission
691	927	1,406	HD	112.7	IMO-T2
759	1,018	1,406	MD	122.3	IMO-T2

*Average fuel consumption according to ISO, see page 6.
Specifications / data subject to change without prior notice.

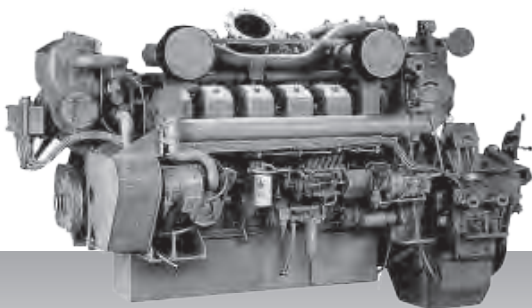
Product dimensions & dry weight

L (mm) : 2,105
W (mm) : 1,183
H (mm) : 1,695
Dry weight (kg) : 3,130

Dimensions and weight are based on standard configuration.

Propulsion - IMO Tier II / CCNR-2 / EU-3A
High speed - Propulsion package

S12A2-T2MPTK



12-cylinder, 4-cycle, water cooled diesel engine,
with direct-injection, turbocharger, air-cooler,
built-up heat exchanger and sea water pump.

Bore x stroke (mm) : 150 x 160
Displacement (l) : 33.93

Commercial rating

kW	bhp	rpm	Rating	Fuel cons. l/hr*	Emission
701	940	1,800	UCD	121.9	IMO-T2
776	1,041	1,860	HD	134.4	IMO-T2
858	1,151	1,920	MD	150.1	IMO-T2

*Average fuel consumption according to ISO, see page 6.
Specifications / data subject to change without prior notice.

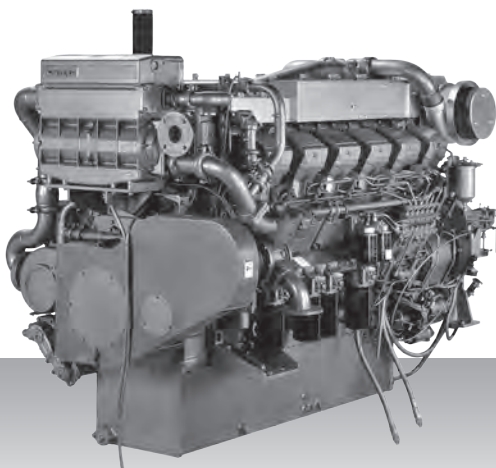
Product dimensions & dry weight

L (mm) : 2,439
W (mm) : 1,482
H (mm) : 1,596
Dry weight (kg) : 3,820

Dimensions and weight are based on standard configuration.

Propulsion - IMO Tier II / CCNR-2 / EU-3A
High speed - Propulsion package

S12R-T2MPTK



12-cylinder, 4-cycle, water cooled diesel engine,
with direct-injection, turbocharger, air-cooler,
built-up heat exchanger and sea water pump.

Bore x stroke (mm) : 170 x 180
Displacement (l) : 49.03

Commercial rating

kW	bhp	rpm	Rating	Fuel cons. l/hr*	Emission
940	1,261	1,600	UCD	155.9	IMO-T2
1,040	1,395	1,650	HD	173.0	IMO-T2
1,210	1,623	1,800	MD	203.6	IMO-T2

*Average fuel consumption according to ISO, see page 6.
Specifications / data subject to change without prior notice.

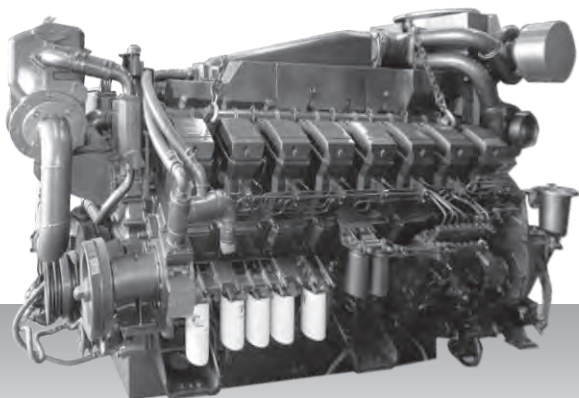
Product dimensions & dry weight

L (mm) : 2,556
W (mm) : 1,622
H (mm) : 1,728
Dry weight (kg) : 5,500

Dimensions and weight are based on standard configuration.

Propulsion - IMO Tier II / CCNR-2 / EU-3A
High speed - Propulsion package

S16R-T2MPTK



16-cylinder, 4-cycle, water cooled diesel engine,
with direct-injection, turbocharger, air-cooler,
built-up heat exchanger and sea water pump.

Bore x stroke (mm) : 170 x 180
Displacement (l) : 65.37

Commercial rating

kW	bhp	rpm	Rating	Fuel cons. l/hr*	Emission
1,250	1,676	1,600	UCD	207.3	IMO-T2
1,380	1,851	1,650	HD	229.5	IMO-T2
1,610	2,159	1,800	MD	271.7	IMO-T2

*Average fuel consumption according to ISO, see page 6.
Specifications / data subject to change without prior notice.

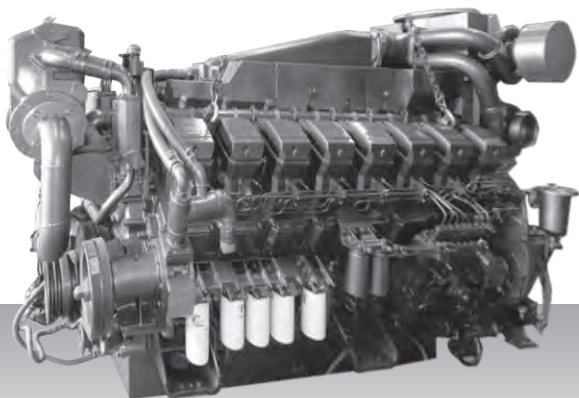
Product dimensions & dry weight

L (mm) : 3,086
W (mm) : 1,622
H (mm) : 1,960
Dry weight (kg) : 7,000

Dimensions and weight are based on standard configuration.

Propulsion - IMO Tier II / CCNR-2 / EU-3A
High speed - Propulsion package

S16R2-T2MPTK



16-cylinder, 4-cycle, water cooled diesel engine,
with direct-injection, turbocharger, air-cooler,
built-up heat exchanger and sea water pump.

Bore x stroke (mm) : 170 x 220
Displacement (l) : 79.90

Commercial rating

kW	bhp	rpm	Rating	Fuel cons. l/hr*	Emission
1,450	1,944	1,350	UCD	on request	IMO-T2
1,600	2,156	1,400	HD	on request	IMO-T2
1,885	2,528	1,500	MD	on request	IMO-T2

*Average fuel consumption according to ISO, see page 6.
Specifications / data subject to change without prior notice.

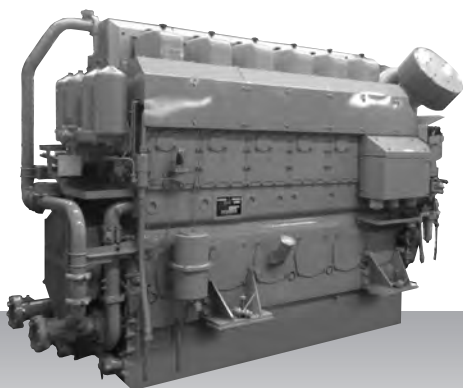
Product dimensions & dry weight

L (mm) : 3,065
W (mm) : 1,622
H (mm) : 2,030
Dry weight (kg) : 8,000

Dimensions and weight are based on standard configuration.

Propulsion - IMO Tier II / CCNR-2
Medium speed

S6U-C2MPTK



6-cylinder, 4-cycle, water cooled diesel engine,
with direct-injection, turbocharger and air-cooler.

Bore x stroke (mm) : 240 x 260

Displacement (l) : 70.57

Commercial rating

kW	bhp	rpm	Rating	Fuel Cons. g/kWh*	Emission
680	912	1,100	HD	on request	IMO-T2
719	964	1,100	HD	on request	IMO-T2
749	1,004	1,100	HD	on request	IMO-T2
1,007	1,350	1,060	HD	200.0	IMO-T2 / CCNR-2
1,103	1,479	1,150	HD-T	200.0	IMO-T2 / CCNR-2
1,119	1,499	1,100	MD	200.0	IMO-T2 / CCNR-2

*Fuel consumption value at 100% rated power in g/kWh.
Specifications / data subject to change without prior notice.

Product dimensions & dry weight

L (mm) : 3,211

W (mm) : 1,429

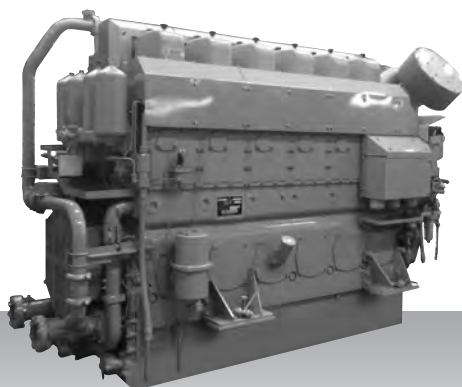
H (mm) : 2,104

Dry weight (kg) : 8,400

Dimensions and weight are based on standard configuration.

Propulsion - IMO Tier II / CCNR-2
Medium speed

S6U2-MPTK



6-cylinder, 4-cycle, water cooled diesel engine,
with direct-injection, turbocharger, air-cooler,

Bore x stroke (mm) : 240 × 300

Displacement (l) : 81.43

Commercial rating

kW	bhp	rpm	Rating	Fuel Cons. g/kWh*	Emission
1,040	1,395	930	HD	194.0	IMO-T2 / CCNR-2
1,156	1,550	960	MD	194.0	IMO-T2 / CCNR-2

*Fuel consumption value at 100% rated power in g/kWh.
Specifications / data subject to change without prior notice.

Product dimensions & dry weight

L (mm) : 3,226

W (mm) : 1,429

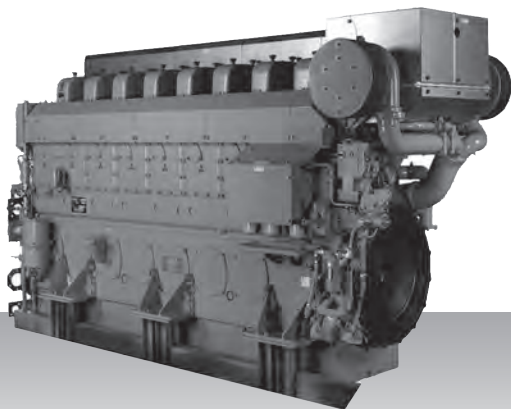
H (mm) : 2,177

Dry weight (kg) : 8,600

Dimensions and weight are based on standard configuration.

Propulsion - IMO Tier II / CCNR-2
Medium speed

S8U-C2MPTK



8-cylinder, 4-cycle, water cooled diesel engine,
with direct-injection, turbocharger, air-cooler,.

Bore x stroke (mm) : 240 x 260

Displacement (l) : 94.10

Commercial rating

kW	bhp	rpm	Rating	Fuel Cons. g/kWh*	Emission
1,343	1,801	1,060	HD	204.0	IMO-T2 / CCNR-2
1,470	1,971	1,150	HD-T	204.0	IMO-T2 / CCNR-2
1,492	2,001	1,100	MD	204.0	IMO-T2 / CCNR-2

*Fuel consumption value at 100% rated power in g/kWh.
Specifications / data subject to change without prior notice.

Product dimensions & dry weight

L (mm) : 4,065

W (mm) : 1,539

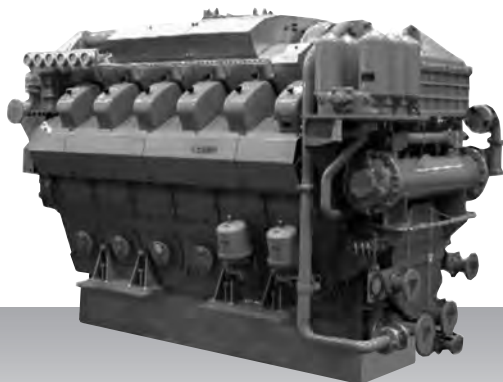
H (mm) : 2,192

Dry weight (kg) : 11,000

Dimensions and weight are based on standard configuration.

Propulsion - IMO Tier II / CCNR-2
Medium speed

S12U-MPTK



12-cylinder, 4-cycle, water cooled diesel engine,
with direct-injection, turbocharger and air-cooler.

Bore x stroke (mm) : 240 x 260

Displacement (l) : 141.15

Commercial rating

kW	bhp	rpm	Rating	Fuel Cons. g/kWh*	Emission
2,014	2,701	1,060	HD	200.0	IMO-T2
2,205	2,957	1,150	HD-T	200.0	IMO-T2
2,238	3,001	1,100	MD	200.0	IMO-T2

*Fuel consumption value at 100% rated power in g/kWh.
Specifications / data subject to change without prior notice.

Product dimensions & dry weight

L (mm) : 3,562

W (mm) : 1,910

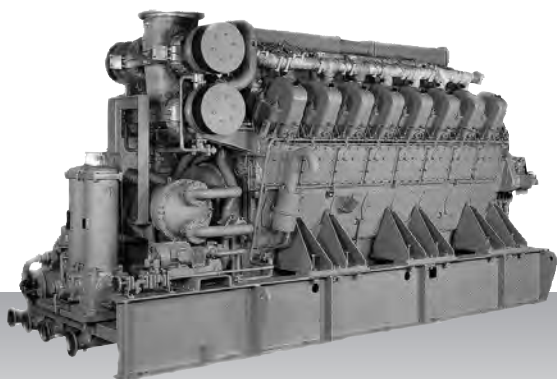
H (mm) : 2,374

Dry weight (kg) : 16,600

Dimensions and weight are based on standard configuration.

Propulsion - IMO Tier II / CCNR-2
Medium speed

S16U-C2MPTK



16-cylinder, 4-cycle, water cooled diesel engine,
with direct-injection, turbocharger and air-cooler.

Bore x stroke (mm) : 240 x 260

Displacement (l) : 188.19

Commercial rating

kW	bhp	rpm	Rating	Fuel Cons. g/kWh*	Emission
2,686	3,602	1,060	HD	204.0	IMO-T2
2,940	3,943	1,150	HD-T	204.0	IMO-T2
2,984	4,002	1,100	MD	204.0	IMO-T2

*Fuel consumption value at 100% rated power in g/kWh.
Specifications / data subject to change without prior notice.

Product dimensions & dry weight

L (mm) : 4,628

W (mm) : 1,710

H (mm) : 2,473

Dry weight (kg) : 20,500

Dimensions and weight are based on standard configuration.